

Anti-PTPRB antibody (1173-1260) (STJ11105723)

STJ11105723

GENERAL INFORMATION

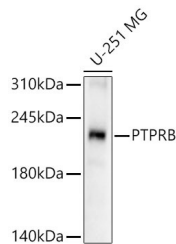
Product Type	Primary antibodies
Short Description	
Applications	WB/ELISA
Host/Source	Rabbit
Reactivity	Human

PRODUCT PROPERTIES

Clonality	Polyclonal
Clone ID	
Concentration	Lot specific
Conjugation	Unconjugated
Purification	Affinity purification
Dilution Range	WB:1:500-1:1000 ELISA:Recommended starting concentration is 1 μ g/mL. Please optimize the concentration based on your specific assay requirements.
Formulation	PBS with 0.05% Proclin300, 50% Glycerol, pH 7.3.
Isotype	IgG
Storage Instruction	Store at -20°C for up to 1 year from the date of receipt, and avoid repeat freeze-thaw cycles.

TARGET INFORMATION

Gene ID	5787
Gene Symbol	PTPRB
Uniprot ID	PTPRB_HUMAN
Immunogen	
Immunogen Region	1173-1260
Specificity	Recombinant Protein corresponding to a sequence within amino acids 1173-1260 of human PTPRB (NP_002828.3).
Immunogen Sequence	PASVSHLRGSRNRTTDSLWF NWSPASGDFDFYELILYNPN GTKKENWKDKLTEWRFQGL VPRKRYVLWVWTHSGDLSNK VTAESRTA



Western blot analysis of lysates from U-251 MG cells using α -PTPRB Rabbit polyclonal antibody (STJ11105723) at a 1:800 dilution. Secondary antibody: HRP-Goat Anti-Rabbit IgG (H+L) (STJS000856) at 1:10000 dilution. Lysates/proteins: 25 μ g per lane. Blocking buffer: 3% nonfat dry milk in TBST. Detection: ECL Basic Kit. Exposure time: 90s.

This product is suitable for in-vitro studies under the RESEARCH USE ONLY [RUO] licence. This product must not be used as for diagnostic or other medical purposes.
St John's Laboratory Ltd, Knowledge Dock Business Centre, University Way, London, E16 2RD | Tel: 0208 223 3081