

## Anti-MSI2 antibody (1-80) (STJ11105713)

STJ11105713

### GENERAL INFORMATION

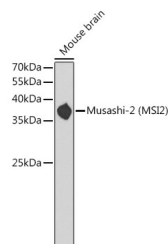
<b>Product Type</b>	Primary antibodies
<b>Short Description</b>	
<b>Applications</b>	WB/ELISA
<b>Host/Source</b>	Rabbit
<b>Reactivity</b>	Human/Mouse

### PRODUCT PROPERTIES

<b>Clonality</b>	Polyclonal
<b>Clone ID</b>	
<b>Concentration</b>	Lot specific
<b>Conjugation</b>	Unconjugated
<b>Purification</b>	Affinity purification
<b>Dilution Range</b>	WB:1:500-1:2000 ELISA:Recommended starting concentration is 1 Mu g/mL. Please optimize the concentration based on your specific assay requirements.
<b>Formulation</b>	PBS with 0.05% Proclin300, 50% Glycerol, pH 7.3.
<b>Isotype</b>	IgG
<b>Storage Instruction</b>	Store at -20°C for up to 1 year from the date of receipt, and avoid repeat freeze-thaw cycles.

### TARGET INFORMATION

<b>Gene ID</b>	124540
<b>Gene Symbol</b>	MSI2
<b>Uniprot ID</b>	MSI2H_HUMAN
<b>Immunogen</b>	
<b>Immunogen Region</b>	1-80
<b>Specificity</b>	Recombinant fusion protein containing a sequence corresponding to amino acids 1-80 of human Musashi-2 (Musashi-2 (MSI2) ) (NP_620412.1).
<b>Immunogen Sequence</b>	MEANGSQGTSGSANDSQHDP GKMFIGGLSWQTSPDSLRY FSKFGEIRECMVMRDPTTKR SRGFGFVTFADPASVDKVLG



Western blot analysis of extracts of mouse brain, using Musashi-2 (Musashi-2 (MSI2) ) antibody (STJ11105713). Secondary antibody: HRP Goat Anti-Rabbit IgG (H+L) (STJS000856) at 1:10000 dilution. Lysates/proteins: 25 Mu g per lane. Blocking buffer: 3% nonfat dry milk in TBST.

This product is suitable for in-vitro studies under the RESEARCH USE ONLY [RUO] licence. This product must not be used as for diagnostic or other medical purposes.  
St John's Laboratory Ltd, Knowledge Dock Business Centre, University Way, London, E16 2RD | Tel: 0208 223 3081