

Anti-CD63 antibody (103-203) (STJ11105705)

STJ11105705

GENERAL INFORMATION

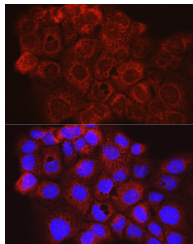
Product Type	Primary antibodies
Short Description	
Applications	WB/IHC-P/IF/ICC/ELISA
Host/Source	Rabbit
Reactivity	Human

PRODUCT PROPERTIES

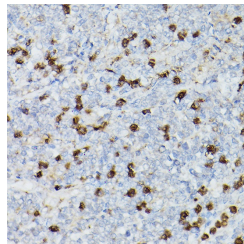
Clonality	Polyclonal
Clone ID	
Concentration	Lot specific
Conjugation	Unconjugated
Purification	Affinity purification
Dilution Range	WB:1:100-1:500 IHC-P:1:50-1:200 IHC-P:1:50-1:100 ELISA:Recommended starting concentration is 1 µg/mL. Please optimize the concentration based on your specific assay requirements.
Formulation	PBS with 0.09% Sodium Azide, 50% Glycerol, pH 7.3.
Isotype	IgG
Storage Instruction	Store at -20°C for up to 1 year from the date of receipt, and avoid repeat freeze-thaw cycles.

TARGET INFORMATION

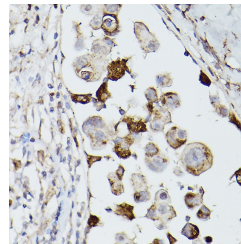
Gene ID	967
Gene Symbol	CD63
Uniprot ID	CD63_HUMAN
Immunogen	
Immunogen Region	103-203
Specificity	Recombinant fusion protein containing a sequence corresponding to amino acids 103-203 of human CD63 (NP_001771.1).
Immunogen Sequence	AGYVFRDKVMSEFNNFRQQ MENYPKNNHTASILDRMQAD FKCCGAANYTDWEKIPSMK NRPVDSCCINVTGCGINFN EKAIHKEGCVKEKIGGWLKRN V



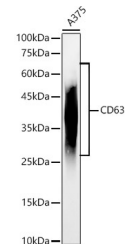
Immunofluorescence analysis of A431 cells using CD63 Rabbit polyclonal antibody (STJ11105705) at dilution of 1:100 (40x lens). Secondary antibody: Cy3 Goat Anti-Rabbit IgG (H+L) at 1:500 dilution. Blue: DAPI for nuclear staining.



Immunohistochemistry analysis of CD63 in paraffin-embedded Human lymphoma using CD63 Rabbit polyclonal antibody (STJ11105705) at dilution of 1:100 (40x lens). Perform high pressure antigen retrieval with 10 mM citrate buffer pH 6.0 before commencing with immunohistochemistry staining protocol.



Immunohistochemistry analysis of CD63 in paraffin-embedded human breast cancer using CD63 Rabbit polyclonal antibody (STJ11105705) at dilution of 1:100 (40x lens). Perform high pressure antigen retrieval with 10 mM citrate buffer pH 6.0 before commencing with immunohistochemistry staining protocol.



Western blot analysis of lysates from A375 cells, using CD63 Rabbit polyclonal antibody (STJ11105705) at 1:400 dilution. Secondary antibody: HRP Goat Anti-Rabbit IgG (H+L) (STJS000856) at 1:10000 dilution. Lysates/proteins: 25 µg per lane. Blocking buffer: 3% nonfat dry milk in TBST. Detection: ECL Basic Kit. Exposure time: 60s.

This product is suitable for in-vitro studies under the RESEARCH USE ONLY [RUO] licence. This product must not be used as for diagnostic or other medical purposes.
St John's Laboratory Ltd, Knowledge Dock Business Centre, University Way, London, E16 2RD | Tel: 0208 223 3081