

**Anti-PDAP1 antibody (1-100 aa) (STJ11105692)**  
STJ11105692

**GENERAL INFORMATION**

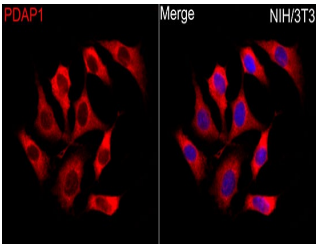
<b>Product Type</b>	Primary antibodies
<b>Short Description</b>	
<b>Applications</b>	WB/IF/ICC/ELISA
<b>Host/Source</b>	Rabbit
<b>Reactivity</b>	Human/Mouse/Rat

**PRODUCT PROPERTIES**

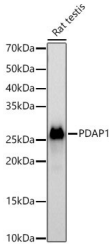
<b>Clonality</b>	Polyclonal
<b>Clone ID</b>	
<b>Concentration</b>	Lot specific
<b>Conjugation</b>	Unconjugated
<b>Purification</b>	Affinity purification
<b>Dilution Range</b>	WB:1:500-1:1000 IF/ICC:1:50-1:200 ELISA:Recommended starting concentration is 1 Mu g/mL. Please optimize the concentration based on your specific assay requirements.
<b>Formulation</b>	PBS with 0.05% Proclin300, 50% Glycerol, pH 7.3.
<b>Isotype</b>	IgG
<b>Storage</b>	Store at -20°C for up to 1 year from the date of receipt, and avoid repeat freeze-thaw cycles.
<b>Instruction</b>	

**TARGET INFORMATION**

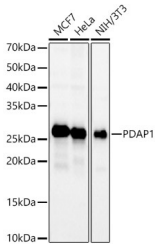
<b>Gene ID</b>	11333
<b>Gene Symbol</b>	PDAP1
<b>Uniprot ID</b>	HAP28_HUMAN
<b>Immunogen</b>	
<b>Immunogen Region</b>	1-100 aa
<b>Specificity</b>	A synthetic peptide corresponding to a sequence within amino acids 1-100 of human PDAP1 (NP_055706.1).
<b>Immunogen Sequence</b>	MPKGGRRKGHGKGRARQYTSP EEIDAQLQAEKQKAREEEQ KEGGDGAAGDPKKEKSLDS DESEDEDDYQQKRKGVEGL IDIEPNRVAQTTKKVTQLD



Immunofluorescence analysis of NIH/3T3 cells using PDAP1 Rabbit polyclonal antibody (STJ11105692) at dilution of 1:50 (40x lens). Secondary antibody: Cy3 Goat Anti-Rabbit IgG (H+L) at 1:500 dilution. Blue: DAPI for nuclear staining.



Western blot analysis of lysates from Rat testis using PDAP1 Rabbit polyclonal antibody (STJ11105692) at 1:500 dilution. Secondary antibody:HRP Goat Anti-Rabbit IgG (H+L) (STJS000856) at 1:10000 dilution. Lysates/proteins: 25A Mu g per lane. Blocking buffer: 3% nonfat dry milk in TBST. Detection:ECL Basic Kit. Exposuretime:60s.



Western blot analysis of various lysates using PDAP1 Rabbit polyclonal antibody (STJ11105692) at 1:500 dilution. Secondary antibody:HRP Goat Anti-Rabbit IgG (H+L) (STJS000856) at 1:10000 dilution. Lysates/proteins: 25 Mu g per lane. Blocking buffer: 3 % nonfat dry milk in TBST. Detection:ECL Basic Kit. Exposuretime:A 30s.

This product is suitable for in-vitro studies under the RESEARCH USE ONLY [RUO] licence. This product must not be used as for diagnostic or other medical purposes.  
St John's Laboratory Ltd, Knowledge Dock Business Centre, University Way, London, E16 2RD | Tel: 0208 223 3081