

Anti-GPS2 antibody (C-Term) (STJ11105687)

STJ11105687

GENERAL INFORMATION

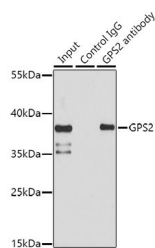
Product Type	Primary antibodies
Short Description	
Applications	WB/IP/ELISA
Host/Source	Rabbit
Reactivity	Human/Mouse/Rat

PRODUCT PROPERTIES

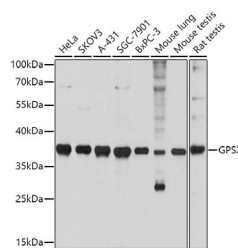
Clonality	Polyclonal
Clone ID	
Concentration	Lot specific
Conjugation	Unconjugated
Purification	Affinity purification
Dilution Range	WB:1:500-1:2000 IP:0.5 Mu g-4 Mu g antibody for 200 Mu g-400 Mu g extracts of whole cells ELISA:Recommended starting concentration is 1 Mu g/mL. Please optimize the concentration based on your specific assay requirements.
Formulation	PBS with 0.01% Thimerosal, 50% Glycerol, pH 7.3.
Isotype	IgG
Storage Instruction	Store at -20°C for up to 1 year from the date of receipt, and avoid repeat freeze-thaw cycles.

TARGET INFORMATION

Gene ID	56310
Gene Symbol	Gps2
Uniprot ID	GPS2_MOUSE
Immunogen	
Immunogen Region	C-Term
Specificity	A synthetic peptide corresponding to a sequence within amino acids 200 to the C-terminus of mouse GPS2 (NP_062700.2).
Immunogen Sequence	TQPAYSPSQQLRAPSAFFAV QYLSQPQPQPYAVHGHFQPT QTGFLQPGSTLSLQKQMEHA NQQTFSFSDSSSLRPMHPQAL HPAPGLLASPLPVQIQAAAG KSGFATTSQPGPRLPIQHS QNPRFYHK



Immunoprecipitation analysis of 150 Mu g extracts of HeLa cells using 3 Mu g GPS2 antibody (STJ11105687). Western blot was performed from the immunoprecipitate using GPS2 antibody (STJ11105687) at a dilution of 1:1000.



Western blot analysis of various lysates using GPS2 Rabbit polyclonal antibody (STJ11105687) at 1:3000 dilution. Secondary antibody: HRP Goat Anti-Rabbit IgG (H+L) (STJS000856) at 1:10000 dilution. Lysates/proteins: 25 Mu g per lane. Blocking buffer: 3% nonfat dry milk in TBST. Detection: ECL Basic Kit. Exposure time: 30s.

This product is suitable for in-vitro studies under the RESEARCH USE ONLY [RUO] licence. This product must not be used as for diagnostic or other medical purposes.
St John's Laboratory Ltd, Knowledge Dock Business Centre, University Way, London, E16 2RD | Tel: 0208 223 3081