

## Anti-Myosin heavy chain antibody (1730-1830) (STJ11105659)

STJ11105659

### GENERAL INFORMATION

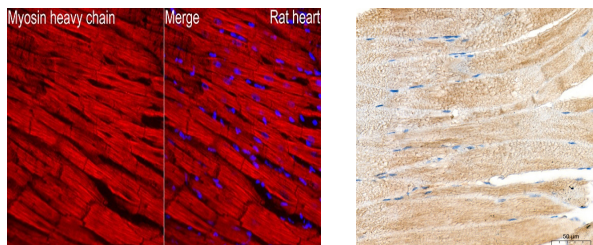
<b>Product Type</b>	Primary antibodies
<b>Short Description</b>	
<b>Applications</b>	IHC-P/IF/ICC/ELISA
<b>Host/Source</b>	Rabbit
<b>Reactivity</b>	Mouse/Rat

### PRODUCT PROPERTIES

<b>Clonality</b>	Polyclonal
<b>Clone ID</b>	
<b>Concentration</b>	Lot specific
<b>Conjugation</b>	Unconjugated
<b>Purification</b>	Affinity purification
<b>Dilution Range</b>	IHC-P:1:50-1:200 IF/ICC:1:50-1:200 ELISA:Recommended starting concentration is 1 µg/mL. Please optimize the concentration based on your specific assay requirements.
<b>Formulation</b>	PBS with 0.05% Proclin300, 50% Glycerol, pH 7.3.
<b>Isotype</b>	IgG
<b>Storage</b>	Store at -20°C for up to 1 year from the date of receipt, and avoid repeat freeze-thaw cycles.
<b>Instruction</b>	

### TARGET INFORMATION

<b>Gene ID</b>	4625 4624
<b>Gene Symbol</b>	MYH7 MYH6
<b>Uniprot ID</b>	MYH7_HUMAN MYH6_HUMAN
<b>Immunogen</b>	
<b>Immunogen Region</b>	1730-1830
<b>Specificity</b>	A synthetic peptide corresponding to a sequence within amino acids 1730-1830 of human Myosin heavy chain (NP_002462.2).
<b>Immunogen Sequence</b>	KKMESDLTLQSQSEVEEAVQE CRNAEEKAKKAITDAAMAE ELKKEQDTSAPHLERMKKNME QTIKDLQHRLEAEQIALKG GKKLQKLEARVRELEGELE A



Immunofluorescence analysis of rat heart tissue using Anti-Myosin heavy chain Rabbit polyclonal antibody (STJ11105659) at a dilution of 1:100 (40x lens). Secondary antibody: Cy3 Goat Anti-Rabbit IgG (H+L) at 1:500 dilution. Blue: DAPI for nuclear staining. Perform high pressure antigen retrieval with 0.01 M citrate buffer (pH 6.0) prior to IF staining.

Immunohistochemistry analysis of mouse skeletal muscle tissue in paraffin-embedded tissue using Anti-Myosin heavy chain Rabbit polyclonal antibody (STJ11105659) at a dilution of 1:200 (40x lens). High pressure antigen retrieval was performed with 0.01 M citrate buffer (pH 6.0) prior to immunohistochemistry staining.

This product is suitable for in-vitro studies under the RESEARCH USE ONLY [RUO] licence. This product must not be used as for diagnostic or other medical purposes.  
St John's Laboratory Ltd, Knowledge Dock Business Centre, University Way, London, E16 2RD | Tel: 0208 223 3081