

Anti-S100a9 antibody (1-113) (STJ11105646)

STJ11105646

GENERAL INFORMATION

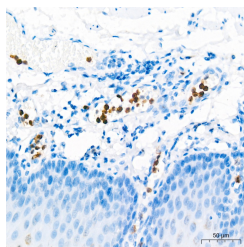
| | |
|--------------------------|--------------------|
| Product Type | Primary antibodies |
| Short Description | |
| Applications | WB/IHC-P/ELISA |
| Host/Source | Rabbit |
| Reactivity | Human/Mouse |

PRODUCT PROPERTIES

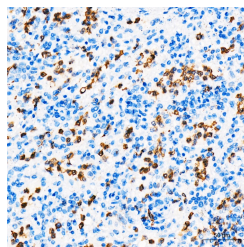
| | |
|----------------------------|---|
| Clonality | Polyclonal |
| Clone ID | |
| Concentration | Lot specific |
| Conjugation | Unconjugated |
| Purification | Affinity purification |
| Dilution Range | WB:1:500-1:1000 IHC-P:1:500-1:1000 ELISA:Recommended starting concentration is 1 μ g/mL. Please optimize the concentration based on your specific assay requirements. |
| Formulation | PBS with 0.05% Proclin300, 50% Glycerol, pH 7.3. |
| Isotype | IgG |
| Storage Instruction | Store at -20°C for up to 1 year from the date of receipt, and avoid repeat freeze-thaw cycles. |

TARGET INFORMATION

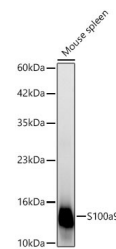
| | |
|---------------------------|---|
| Gene ID | 20202 |
| Gene Symbol | S100a9 |
| Uniprot ID | S10A9_MOUSE |
| Immunogen | |
| Immunogen Region | 1-113 |
| Specificity | Recombinant fusion protein containing a sequence corresponding to amino acids 1-113 of mouse S100a9 (NP_033140.1). |
| Immunogen Sequence | MANKAPSQMERSITTIIDTF HQYSRKEGHPDTLSKKEFRQ MVEAQLATFMKKEKRNEALI NDIMEDLDTNQDNQLSFEEC MMLMAKLIFACHEKLHENNP RGHGHSHGKGCCK |



Immunohistochemistry analysis of S100a9 in paraffin-embedded human esophagus tissue using S100a9 Rabbit polyclonal antibody (STJ11105646) at a dilution of 1:1000 (40x lens). High pressure antigen retrieval was performed with 0.01 M citrate buffer (pH 6.0) prior to immunohistochemistry staining.



Immunohistochemistry analysis of S100a9 in paraffin-embedded human spleen tissue using S100a9 Rabbit polyclonal antibody (STJ11105646) at a dilution of 1:1000 (40x lens). High pressure antigen retrieval was performed with 0.01 M citrate buffer (pH 6.0) prior to immunohistochemistry staining.



Western blot analysis of lysates from mouse spleen using S100a9 Rabbit polyclonal antibody (STJ11105646) at 1:1000 dilution. Secondary antibody: HRP Goat Anti-Rabbit IgG (H+L) (STJ5000856) at 1:10000 dilution. Lysates/proteins: 25 μ g per lane. Blocking buffer: 3% nonfat dry milk in TBST. Detection: ECL Basic Kit. Exposure time: 10s.

This product is suitable for in-vitro studies under the RESEARCH USE ONLY [RUO] licence. This product must not be used as for diagnostic or other medical purposes.
St John's Laboratory Ltd, Knowledge Dock Business Centre, University Way, London, E16 2RD | Tel: 0208 223 3081