

Anti-CCL25 antibody (50-150) (STJ11105643)
STJ11105643

GENERAL INFORMATION

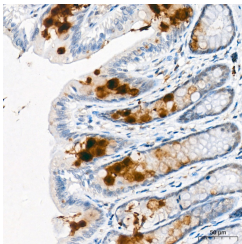
Product Type	Primary antibodies
Short Description	
Applications	WB/IHC-P/ELISA
Host/Source	Rabbit
Reactivity	Human/Mouse/Rat

PRODUCT PROPERTIES

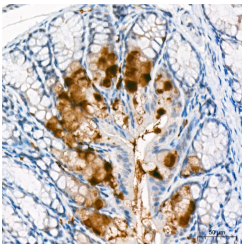
Clonality	Polyclonal
Clone ID	
Concentration	Lot specific
Conjugation	Unconjugated
Purification	Affinity purification
Dilution Range	WB:1:500-1:1000 IHC-P:1:100-1:500 ELISA:Recommended starting concentration is 1 Mu g/mL. Please optimize the concentration based on your specific assay requirements.
Formulation	PBS with 0.05% Proclin300, 50% Glycerol, pH 7.3.
Isotype	IgG
Storage	Store at -20°C for up to 1 year from the date of receipt, and avoid repeat freeze-thaw cycles.
Instruction	

TARGET INFORMATION

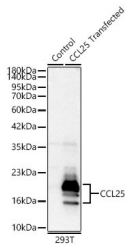
Gene ID	6370
Gene Symbol	CCL25
Uniprot ID	CCL25_HUMAN
Immunogen	
Immunogen Region	50-150
Specificity	A synthetic peptide corresponding to a sequence within amino acids 50-150 of human CCL25 (NP_001381563.1).
Immunogen Sequence	RIQEVSGSCNLPAAIFYLPK RHRKVCGNPKSREVQRAMKL LDARNKVFAKLHHNTQTFFQA GPHAVKKLSSGNSKLSSSKF SNPISSSKRNVSLISANSGL



Immunohistochemistry analysis of CCL25 in paraffin-embedded rat large intestine tissue using CCL25 Rabbit polyclonal antibody (STJ11105643) at a dilution of 1:300 (40x lens). High pressure antigen retrieval was performed with 0.01 M citrate buffer (pH 6.0) prior to immunohistochemistry staining.



Immunohistochemistry analysis of CCL25 in paraffin-embedded mouse large intestine tissue using CCL25 Rabbit polyclonal antibody (STJ11105643) at a dilution of 1:300 (40x lens). High pressure antigen retrieval was performed with 0.01 M citrate buffer (pH 6.0) prior to immunohistochemistry staining.



Western blot analysis of lysates from wild type (WT) and 293T cells transfected with CCL25 using CCL25 Rabbit polyclonal antibody (STJ11105643) at a 1:1000 dilution. Secondary antibody:HRP Goat Anti-Rabbit IgG (H+L) (STJS000856) at 1:10000 dilution. Lysates/proteins: 30A Mu g per lane. Blocking buffer: 3% nonfat dry milk in TBST. Detection:ECL Basic Kit. Exposure time: 10s.

This product is suitable for in-vitro studies under the RESEARCH USE ONLY [RUO] licence. This product must not be used as for diagnostic or other medical purposes.
St John's Laboratory Ltd, Knowledge Dock Business Centre, University Way, London, E16 2RD | Tel: 0208 223 3081