

Anti-ARHGEF2 antibody (850-950) (STJ11105640)

STJ11105640

GENERAL INFORMATION

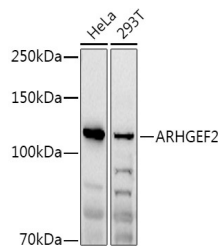
Product Type	Primary antibodies
Short Description	
Applications	WB/ELISA
Host/Source	Rabbit
Reactivity	Human

PRODUCT PROPERTIES

Clonality	Polyclonal
Clone ID	
Concentration	Lot specific
Conjugation	Unconjugated
Purification	Affinity purification
Dilution Range	WB:1:500-1:1000 ELISA:Recommended starting concentration is 1 Mu g/mL. Please optimize the concentration based on your specific assay requirements.
Formulation	PBS with 0.01% Thimerosal, 50% Glycerol, pH 7.3.
Isotype	IgG
Storage Instruction	Store at -20°C for up to 1 year from the date of receipt, and avoid repeat freeze-thaw cycles.

TARGET INFORMATION

Gene ID	9181
Gene Symbol	ARHGEF2
Uniprot ID	ARHG2_HUMAN
Immunogen	
Immunogen Region	850-950
Specificity	A synthetic peptide corresponding to a sequence within amino acids 850-950 of human ARHGEF2 (NP_001155855.1).
Immunogen Sequence	EREAEAEARRQLAALGQTEPL PAEAPWARRPVDPRRRSLPA GDALYLSFNPPQPSRGTDRL DLPVTTRSVHRNFEDRERQE LGSPEERLQDSSDPDTGSEE E



Western blot analysis of various lysates using ARHGEF2 Rabbit polyclonal antibody (STJ11105640) at 1:1000 dilution. Secondary antibody: HRP Goat Anti-Rabbit IgG (H+L) (STJ5000856) at 1:10000 dilution. Lysates/proteins: 25 Mu g per lane. Blocking buffer: 3% nonfat dry milk in TBST. Detection: ECL Basic Kit. Exposure time: 180s.

This product is suitable for in-vitro studies under the RESEARCH USE ONLY [RUO] licence. This product must not be used as for diagnostic or other medical purposes.
St John's Laboratory Ltd, Knowledge Dock Business Centre, University Way, London, E16 2RD | Tel: 0208 223 3081