

## Anti-NFKBIZ antibody (1-100) (STJ11105623)

STJ11105623

### GENERAL INFORMATION

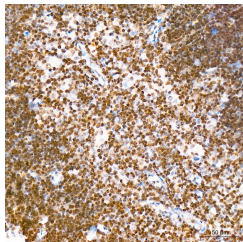
<b>Product Type</b>	Primary antibodies
<b>Short Description</b>	
<b>Applications</b>	IHC-P/ELISA
<b>Host/Source</b>	Rabbit
<b>Reactivity</b>	Mouse

### PRODUCT PROPERTIES

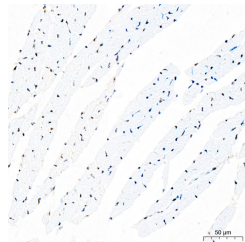
<b>Clonality</b>	Polyclonal
<b>Clone ID</b>	
<b>Concentration</b>	Lot specific
<b>Conjugation</b>	Unconjugated
<b>Purification</b>	Affinity purification
<b>Dilution Range</b>	IHC-P:1:500-1:1000 ELISA:Recommended starting concentration is 1 Mu g/mL. Please optimize the concentration based on your specific assay requirements.
<b>Formulation</b>	PBS with 0.05% Proclin300, 50% Glycerol, pH 7.3.
<b>Isotype</b>	IgG
<b>Storage</b>	Store at -20°C for up to 1 year from the date of receipt, and avoid repeat freeze-thaw cycles.
<b>Instruction</b>	

### TARGET INFORMATION

<b>Gene ID</b>	64332
<b>Gene Symbol</b>	NFKBIZ
<b>Uniprot ID</b>	IKBZ_HUMAN
<b>Immunogen</b>	
<b>Immunogen Region</b>	1-100
<b>Specificity</b>	A synthetic peptide corresponding to a sequence within amino acids 1-100 of human I Kappa B-Zeta (NP_113607.1).
<b>Immunogen Sequence</b>	MIVDKLLDDSRGGEGLRDAA GGCGMLTSPNLNSFYFGASP PAAAPGACDASCVLGPSAP GSPGSDSSDFSSASSVSSCG AVESRSRGGARAERQPVPEH



Immunohistochemistry analysis of a Kappa B-Zeta in paraffin-embedded mouse spleen tissue using a Kappa B-Zeta Rabbit polyclonal antibody (STJ11105623) at a dilution of 1:800 (40x lens). High pressure antigen retrieval was performed with 0.01 M citrate buffer (pH 6.0) prior to immunohistochemistry staining.



Immunohistochemistry analysis of a Kappa B-Zeta in paraffin-embedded mouse heart tissue using a Kappa B-Zeta Rabbit polyclonal antibody (STJ11105623) at a dilution of 1:800 (40x lens). High pressure antigen retrieval was performed with 0.01 M citrate buffer (pH 6.0) prior to immunohistochemistry staining.