

Anti-MRPL19 antibody (181-292) (STJ11105619)

STJ11105619

GENERAL INFORMATION

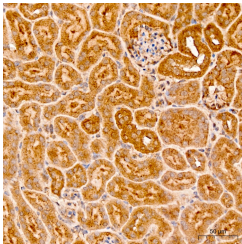
Product Type	Primary antibodies
Short Description	
Applications	IHC-P/ELISA
Host/Source	Rabbit
Reactivity	Human/Mouse/Rat

PRODUCT PROPERTIES

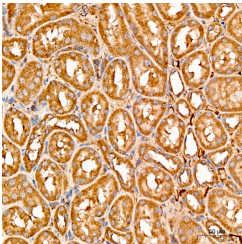
Clonality	Polyclonal
Clone ID	
Concentration	Lot specific
Conjugation	Unconjugated
Purification	Affinity purification
Dilution Range	IHC-P:1:50-1:200 ELISA:Recommended starting concentration is 1 µg/mL. Please optimize the concentration based on your specific assay requirements.
Formulation	PBS with 0.05% Proclin300, 50% Glycerol, pH 7.3.
Isotype	IgG
Storage	Store at -20°C for up to 1 year from the date of receipt, and avoid repeat freeze-thaw cycles.
Instruction	

TARGET INFORMATION

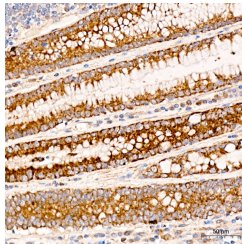
Gene ID	9801
Gene Symbol	MRPL19
Uniprot ID	RM19_HUMAN
Immunogen	
Immunogen Region	181-292
Specificity	Recombinant fusion protein containing a sequence corresponding to amino acids 181-292 of human MRPL19 (NP_055578.2).
Immunogen Sequence	KRLDDSLLYLRDALPEYSTF DVNMKPVVQEPNQKVPVNEL KVKMKPKPWSKRWERPNFNI KGIRFDLCLTEQQMKEAQKW NQPWLEFDMMREYDTSKIEA AIWKEIEASKRS



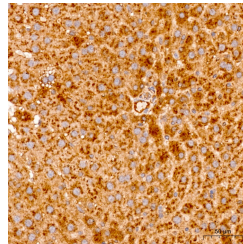
Immunohistochemistry analysis of MRPL19 in paraffin-embedded mouse kidney tissue using MRPL19 Rabbit polyclonal antibody (STJ11105619) at a dilution of 1:200 (40x lens). High pressure antigen retrieval was performed with 0.01 M citrate buffer (pH 6.0) prior to immunohistochemistry staining.



Immunohistochemistry analysis of MRPL19 in paraffin-embedded rat kidney tissue using MRPL19 Rabbit polyclonal antibody (STJ11105619) at a dilution of 1:200 (40x lens). High pressure antigen retrieval was performed with 0.01 M citrate buffer (pH 6.0) prior to immunohistochemistry staining.



Immunohistochemistry analysis of MRPL19 in paraffin-embedded human colon tissue using MRPL19 Rabbit polyclonal antibody (STJ11105619) at a dilution of 1:200 (40x lens). High pressure antigen retrieval was performed with 0.01 M citrate buffer (pH 6.0) prior to immunohistochemistry staining.



Immunohistochemistry analysis of MRPL19 in paraffin-embedded rat liver tissue using MRPL19 Rabbit polyclonal antibody (STJ11105619) at a dilution of 1:200 (40x lens). High pressure antigen retrieval was performed with 0.01 M citrate buffer (pH 6.0) prior to immunohistochemistry staining.

This product is suitable for in-vitro studies under the RESEARCH USE ONLY [RUO] licence. This product must not be used as for diagnostic or other medical purposes.
St John's Laboratory Ltd, Knowledge Dock Business Centre, University Way, London, E16 2RD | Tel: 0208 223 3081