

Anti-MRPS21 antibody (1-87) (STJ11105617)

STJ11105617

GENERAL INFORMATION

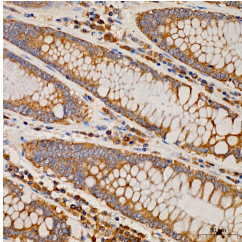
Product Type	Primary antibodies
Short Description	
Applications	IHC-P/ELISA
Host/Source	Rabbit
Reactivity	Human/Mouse/Rat

PRODUCT PROPERTIES

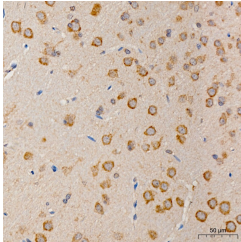
Clonality	Polyclonal
Clone ID	
Concentration	Lot specific
Conjugation	Unconjugated
Purification	Affinity purification
Dilution Range	IHC-P:1:50-1:200 ELISA:Recommended starting concentration is 1 µg/mL. Please optimize the concentration based on your specific assay requirements.
Formulation	PBS with 0.05% Proclin300, 50% Glycerol, pH 7.3.
Isotype	IgG
Storage Instruction	Store at -20°C for up to 1 year from the date of receipt, and avoid repeat freeze-thaw cycles.

TARGET INFORMATION

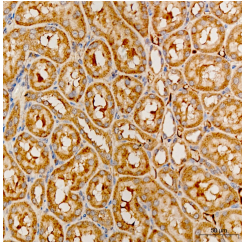
Gene ID	54460
Gene Symbol	MRPS21
Uniprot ID	RT21_HUMAN
Immunogen	
Immunogen Region	1-87
Specificity	Recombinant fusion protein containing a sequence corresponding to amino acids 1-87 of human MRPS21 (NP_114107.2).
Immunogen Sequence	MAKHLKFIARTVMVQEGNVE SAYRTLNRILTMDGLIEDIK HRRYYEKPCCRQRQRESYERCRRIYNMEMARKINFLMRKNRADPWQGC



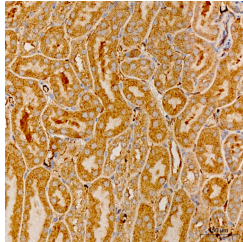
Immunohistochemistry analysis of MRPS21 in paraffin-embedded human colon tissue using MRPS21 Rabbit polyclonal antibody (STJ11105617) at a dilution of 1:200 (40x lens). High pressure antigen retrieval was performed with 0.01 M citrate buffer (pH 6.0) prior to immunohistochemistry staining.



Immunohistochemistry analysis of MRPS21 in paraffin-embedded rat brain tissue using MRPS21 Rabbit polyclonal antibody (STJ11105617) at a dilution of 1:200 (40x lens). High pressure antigen retrieval was performed with 0.01 M citrate buffer (pH 6.0) prior to immunohistochemistry staining.



Immunohistochemistry analysis of MRPS21 in paraffin-embedded rat kidney tissue using MRPS21 Rabbit polyclonal antibody (STJ11105617) at a dilution of 1:200 (40x lens). High pressure antigen retrieval was performed with 0.01 M citrate buffer (pH 6.0) prior to immunohistochemistry staining.



Immunohistochemistry analysis of MRPS21 in paraffin-embedded mouse kidney tissue using MRPS21 Rabbit polyclonal antibody (STJ11105617) at a dilution of 1:200 (40x lens). High pressure antigen retrieval was performed with 0.01 M citrate buffer (pH 6.0) prior to immunohistochemistry staining.

This product is suitable for in-vitro studies under the RESEARCH USE ONLY [RUO] licence. This product must not be used as for diagnostic or other medical purposes.
St John's Laboratory Ltd, Knowledge Dock Business Centre, University Way, London, E16 2RD | Tel: 0208 223 3081