

Anti-ABCA1 antibody (2162-2261) (STJ11105605)
STJ11105605

GENERAL INFORMATION

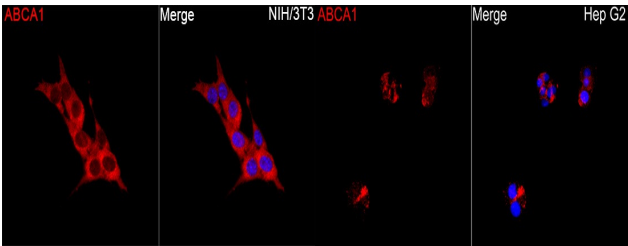
Product Type	Primary antibodies
Short Description	
Applications	IHC-P/IF/ICC/ELISA
Host/Source	Rabbit
Reactivity	Human/Mouse

PRODUCT PROPERTIES

Clonality	Polyclonal
Clone ID	
Concentration	Lot specific
Conjugation	Unconjugated
Purification	Affinity purification
Dilution Range	IHC-P:1:50-1:200 IF/ICC:1:50-1:200 ELISA:Recommended starting concentration is 1 µg/mL. Please optimize the concentration based on your specific assay requirements.
Formulation	PBS with 0.05% Proclin300, 50% Glycerol, pH 7.3.
Isotype	IgG
Storage Instruction	Store at -20°C for up to 1 year from the date of receipt, and avoid repeat freeze-thaw cycles.

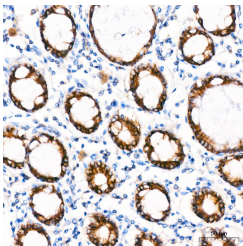
TARGET INFORMATION

Gene ID	19
Gene Symbol	ABCA1
Uniprot ID	ABCA1_HUMAN
Immunogen	
Immunogen Region	2162-2261
Specificity	A synthetic peptide corresponding to a sequence within amino acids 2162-2261 of human ABCA1 (NP_005493.2).
Immunogen Sequence	AFPGSVLKEKHRNMLQYQLP SSLSSLARIFSILSQSKKRL HIEDYSVSQTTLDQVFNFA KDQSDDDHLKDLSLHKNQTV VDVAVLTSFLQDEKVKESYV

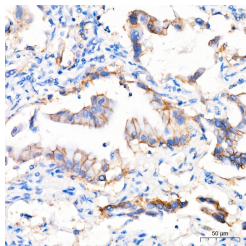


Immunofluorescence analysis of NIH/3T3 cells using ABCA1 Rabbit polyclonal antibody (STJ11105605) at a dilution of 1:100 (40x lens). Secondary antibody: Cy3 Goat Anti-Rabbit IgG (H+L) at 1:500 dilution. Blue: DAPI for nuclear staining.

Immunofluorescence analysis of Hep G2 cells using ABCA1 Rabbit polyclonal antibody (STJ11105605) at a dilution of 1:100 (40x lens). Secondary antibody: Cy3 Goat Anti-Rabbit IgG (H+L) at 1:500 dilution. Blue: DAPI for nuclear staining.



Immunohistochemistry analysis of ABCA1 in paraffin-embedded human colon carcinoma tissue using ABCA1 Rabbit polyclonal antibody (STJ11105605) at a dilution of 1:100 (40x lens). High pressure antigen retrieval was performed with 0.01 M citrate buffer (pH 6.0) prior to immunohistochemistry staining.



Immunohistochemistry analysis of ABCA1 in paraffin-embedded human lung cancer tissue using ABCA1 Rabbit polyclonal antibody (STJ11105605) at a dilution of 1:100 (40x lens). High pressure antigen retrieval was performed with 0.01 M citrate buffer (pH 6.0) prior to immunohistochemistry staining.

This product is suitable for in-vitro studies under the RESEARCH USE ONLY [RUO] licence. This product must not be used as for diagnostic or other medical purposes.
St John's Laboratory Ltd, Knowledge Dock Business Centre, University Way, London, E16 2RD | Tel: 0208 223 3081