

Anti-LRP4 antibody (1621-1720) (STJ11105599)

STJ11105599

GENERAL INFORMATION

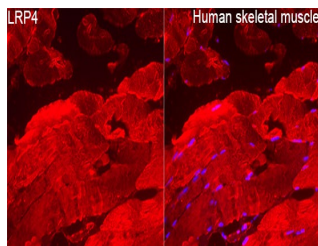
Product Type	Primary antibodies
Short Description	
Applications	IF/ICC/ELISA
Host/Source	Rabbit
Reactivity	Human

PRODUCT PROPERTIES

Clonality	Polyclonal
Clone ID	
Concentration	Lot specific
Conjugation	Unconjugated
Purification	Affinity purification
Dilution Range	IF/ICC:1:50-1:200 ELISA: Recommended starting concentration is 1 µg/mL. Please optimize the concentration based on your specific assay requirements.
Formulation	PBS with 0.05% Proclin300, 50% Glycerol, pH 7.3.
Isotype	IgG
Storage	Store at -20°C for up to 1 year from the date of receipt, and avoid repeat freeze-thaw cycles.
Instruction	

TARGET INFORMATION

Gene ID	4038
Gene Symbol	LRP4
Uniprot ID	LRP4_HUMAN
Immunogen	
Immunogen Region	1621-1720
Specificity	A synthetic peptide corresponding to a sequence within amino acids 1621-1720 of human LRP4 (NP_002325.2).
Immunogen Sequence	NGGCTHLCFARASDFVCACP DEPDSRPCSLVPGLVPPAPR ATGMSEKSPVLPNTPTTLY SSTTRTRTSLEEVEGRCSER DARLGLCARSNDVPAAPGE



Immunofluorescence analysis of A paraffin-embedded Human skeletal muscle tissue using A LRP4 Rabbit polyclonal antibody (STJ11105599) at A aA dilution of A 1:100 (40x lens). Secondary antibody: Cy3 Goat Anti-Rabbit IgG (H+L) at 1:500 dilution. Blue: DAPI for nuclear staining. Perform high pressure antigen retrieval with 0.01 M citrate buffer (pH 6.0) prior to IF staining.

This product is suitable for in-vitro studies under the RESEARCH USE ONLY [RUO] licence. This product must not be used as for diagnostic or other medical purposes.
St John's Laboratory Ltd, Knowledge Dock Business Centre, University Way, London, E16 2RD | Tel: 0208 223 3081