

Anti-CACNA1H antibody (2250-2353) (STJ11105594)

STJ11105594

GENERAL INFORMATION

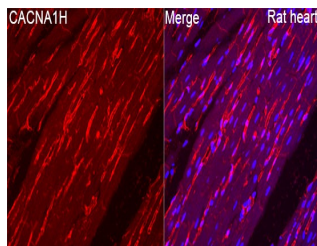
Product Type	Primary antibodies
Short Description	
Applications	IF/ICC/ELISA
Host/Source	Rabbit
Reactivity	Rat

PRODUCT PROPERTIES

Clonality	Polyclonal
Clone ID	
Concentration	Lot specific
Conjugation	Unconjugated
Purification	Affinity purification
Dilution Range	IF/ICC:1:50-1:200 ELISA:Recommended starting concentration is 1 µg/mL. Please optimize the concentration based on your specific assay requirements.
Formulation	PBS with 0.05% Proclin300, 50% Glycerol, pH 7.3.
Isotype	IgG
Storage	Store at -20°C for up to 1 year from the date of receipt, and avoid repeat freeze-thaw cycles.
Instruction	

TARGET INFORMATION

Gene ID	8912
Gene Symbol	CACNA1H
Uniprot ID	CAC1H_HUMAN
Immunogen	
Immunogen Region	2250-2353
Specificity	A synthetic peptide corresponding to a sequence within amino acids 2250-2353 of human CACNA1H (NP_066921.2).
Immunogen Sequence	RWGQASCRAEHLTVPSFAFE PLDLGVPSGDPFLDGSHSVT PESRASSSGAIVPLEPPESE PMPVGDPPPEKRRGLYLTVP QCPLKPGSPSATPAPGGGA DDPV



Immunofluorescence analysis of rat heart tissue using CACNA1H Rabbit polyclonal antibody (STJ11105594) at a dilution of 1:100 (40x lens). Secondary antibody: Cy3 Goat Anti-Rabbit IgG (H+L) at 1:500 dilution. Blue: DAPI for nuclear staining. Perform high pressure antigen retrieval with 0.01 M citrate buffer (pH 6.0) prior to IF staining.