

Anti-CXCR3-B antibody (1-100) (STJ11105591)

STJ11105591

GENERAL INFORMATION

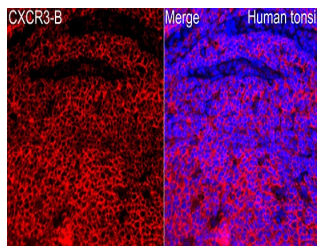
Product Type	Primary antibodies
Short Description	
Applications	WB/IF/ICC/ELISA
Host/Source	Rabbit
Reactivity	Human/Mouse

PRODUCT PROPERTIES

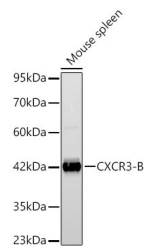
Clonality	Polyclonal
Clone ID	
Concentration	Lot specific
Conjugation	Unconjugated
Purification	Affinity purification
Dilution Range	WB:1:500-1:1000 IF/ICC:1:50-1:200 ELISA:Recommended starting concentration is 1 Mu g/mL. Please optimize the concentration based on your specific assay requirements.
Formulation	PBS with 0.05% Proclin300, 50% Glycerol, pH 7.3.
Isotype	IgG
Storage	Store at -20°C for up to 1 year from the date of receipt, and avoid repeat freeze-thaw cycles.
Instruction	

TARGET INFORMATION

Gene ID	2833
Gene Symbol	CXCR3
Uniprot ID	CXCR3_HUMAN
Immunogen	
Region	1-100
Specificity	Recombinant Protein corresponding to a sequence within amino acids 1-100 human CXCR3-B (NP_001136269.1). MELRKYGPGRLAGTVIGGAA QSKSQTKSDSITKEFLPGLY TAPSSPFPPSQVSDHQVLND AEVAALLENFSSSYDYGENE
Immunogen Sequence	SDSCCTSPPCPQDFSLNFDR



Immunofluorescence analysis of a paraffin-embedded Human tonsil tissue using Anti-CXCR3-B Rabbit polyclonal antibody (STJ11105591) at a dilution of 1:100 (40x lens). Secondary antibody: Cy3 Goat Anti-Rabbit IgG (H+L) at 1:500 dilution. Blue: DAPI for nuclear staining. Perform high pressure antigen retrieval with 0.01 M citrate buffer (pH 6.0) prior to IF staining.



Western blot analysis of lysates from Mouse spleen using Anti-CXCR3-B Rabbit polyclonal antibody (STJ11105591) at a dilution of 1:1000. Secondary antibody: HRP Goat Anti-Rabbit IgG (H+L) (STJ5000856) at 1:10000 dilution. Lysates/proteins: 25A Mu g per lane. Blocking buffer: 3% nonfat dry milk in TBST. Detection: ECL Basic Kit. Exposure time: 30s.

This product is suitable for in-vitro studies under the RESEARCH USE ONLY [RUO] licence. This product must not be used as for diagnostic or other medical purposes.
St John's Laboratory Ltd, Knowledge Dock Business Centre, University Way, London, E16 2RD | Tel: 0208 223 3081