

Anti-RIPK3 antibody (410-518) (STJ11105578)

STJ11105578

GENERAL INFORMATION

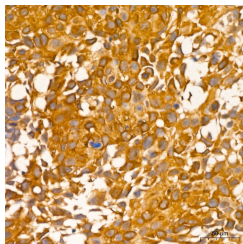
Product Type	Primary antibodies
Short Description	
Applications	IHC-P/ELISA
Host/Source	Rabbit
Reactivity	Human

PRODUCT PROPERTIES

Clonality	Polyclonal
Clone ID	
Concentration	Lot specific
Conjugation	Unconjugated
Purification	Affinity purification
Dilution Range	IHC-P:1:50-1:200 ELISA:Recommended starting concentration is 1 µg/mL. Please optimize the concentration based on your specific assay requirements.
Formulation	PBS with 0.05% Proclin300, 50% Glycerol, pH 7.3.
Isotype	IgG
Storage Instruction	Store at -20°C for up to 1 year from the date of receipt, and avoid repeat freeze-thaw cycles.

TARGET INFORMATION

Gene ID	11035
Gene Symbol	RIPK3
Uniprot ID	RIPK3_HUMAN
Immunogen	
Immunogen Region	410-518
Specificity	A synthetic peptide corresponding to a sequence within amino acids 410-518 of human RIP3 (NP_006862.2).
Immunogen Sequence	SPTSTGTSPSPGPRGNQGAER QGMNWSCTPEPNPTGRPL VNIYNCSGVQVGDNNYLTMQ QTTALPTWGLAPSGKGRGLQ HPPPVGSQEGPKDPEAWSRP QGWYNHSGK



Immunohistochemistry analysis of RIP3 in paraffin-embedded human cervical squamous cell carcinoma tissue using RIP3 Rabbit polyclonal antibody (STJ11105578) at a dilution of 1:100 (40x lens). High pressure antigen retrieval was performed with 0.01 M citrate buffer (pH 6.0) prior to immunohistochemistry staining.