

## Anti-MECR antibody (54-373) (STJ11105571)

STJ11105571

### GENERAL INFORMATION

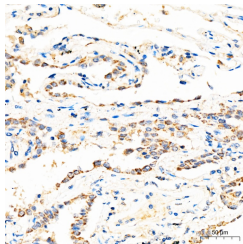
<b>Product Type</b>	Primary antibodies
<b>Short Description</b>	
<b>Applications</b>	IHC-P/ELISA
<b>Host/Source</b>	Rabbit
<b>Reactivity</b>	Human

### PRODUCT PROPERTIES

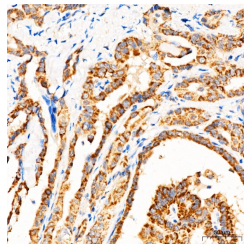
<b>Clonality</b>	Polyclonal
<b>Clone ID</b>	
<b>Concentration</b>	Lot specific
<b>Conjugation</b>	Unconjugated
<b>Purification</b>	Affinity purification
<b>Dilution</b>	IHC-P:1:50-1:200
<b>Range</b>	ELISA:Recommended starting concentration is 1 µg/mL. Please optimize the concentration based on your specific assay requirements.
<b>Formulation</b>	PBS with 0.05% Proclin300, 50% Glycerol, pH 7.3.
<b>Isotype</b>	IgG
<b>Storage</b>	Store at -20°C for up to 1 year from the date of receipt, and avoid repeat freeze-thaw cycles.
<b>Instruction</b>	

### TARGET INFORMATION

<b>Gene ID</b>	51102
<b>Gene Symbol</b>	MECR
<b>Uniprot ID</b>	MECR_HUMAN
<b>Immunogen</b>	
<b>Immunogen Region</b>	54-373
<b>Specificity</b>	Recombinant Protein corresponding to a sequence within amino acids 54-373 of human MECR (NP_057095.4).
<b>Immunogen Sequence</b>	PAKVVELKNLEAAVRGSDV RVKMLAAPINPSDINMIQGN YGFLPELPAVGGNEGVAQVV AVGSNVTGLKPGDWVIPANA GLGTWRTEAVFSEELIQVP SDIPLQSAATLGVNPTAYR MLMDFEQLQPGDSVIQNASN SGVGGQAVIQIAAALGLRTIN VVDRDPDIQKLSDRKSLGA EHVITEELRRPEMKNFFKD MPQPRALNLCVGGKSSTELL RQLARGGTMVTYGGMAKQP



Immunohistochemistry analysis of MECR in paraffin-embedded human lung adenocarcinoma tissue using MECR Rabbit polyclonal antibody (STJ11105571) at a dilution of 1:100 (40x lens). High pressure antigen retrieval was performed with 0.01 M citrate buffer (pH 6.0) prior to immunohistochemistry staining.



Immunohistochemistry analysis of MECR in paraffin-embedded human thyroid cancer tissue using MECR Rabbit polyclonal antibody (STJ11105571) at a dilution of 1:100 (40x lens). High pressure antigen retrieval was performed with 0.01 M citrate buffer (pH 6.0) prior to immunohistochemistry staining.