

Anti-RPE65 antibody (340-440) (STJ11105569)

STJ11105569

GENERAL INFORMATION

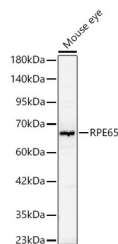
Product Type	Primary antibodies
Short Description	
Applications	WB/ELISA
Host/Source	Rabbit
Reactivity	Mouse

PRODUCT PROPERTIES

Clonality	Polyclonal
Clone ID	
Concentration	Lot specific
Conjugation	Unconjugated
Purification	Affinity purification
Dilution Range	WB:1:500-1:1000 ELISA:Recommended starting concentration is 1 Mu g/mL. Please optimize the concentration based on your specific assay requirements.
Formulation	PBS with 0.05% Proclin300, 50% Glycerol, pH 7.3.
Isotype	IgG
Storage	Store at -20°C for up to 1 year from the date of receipt, and avoid repeat freeze-thaw cycles.
Instruction	

TARGET INFORMATION

Gene ID	6121
Gene Symbol	RPE65
Uniprot ID	RPE65_HUMAN
Immunogen	
Immunogen	340-440
Region	
Specificity	Recombinant Protein corresponding to a sequence within amino acids 340-440 of human RPE65 (NP_000320.1).
Immunogen	YLYLANLRENWEEVKKNARK APQPEVRRYVLPNIDKADT GKNLVTLPNTTATAILCSDE TIWLEPEVLFSGPRQAFEF
Sequence	QINYQKYCGKPYTYAYGLGL N



Western blot analysis of lysates from Mouse eye using A RPE65 Rabbit polyclonal antibody (STJ11105569) at 1:1000 dilution. Secondary antibody:HRP Goat Anti-Rabbit IgG (H+L) (STJS000856) at 1:10000 dilution. Lysates/proteins: 25A Mu g per lane. Blocking buffer: 3% nonfat dry milk in TBST. Detection:ECL Basic Kit. Exposure time:1s.

This product is suitable for in-vitro studies under the RESEARCH USE ONLY [RUO] licence. This product must not be used as for diagnostic or other medical purposes.
St John's Laboratory Ltd, Knowledge Dock Business Centre, University Way, London, E16 2RD | Tel: 0208 223 3081