

Anti-ACSM3 antibody (28-130) (STJ11105568)

STJ11105568

GENERAL INFORMATION

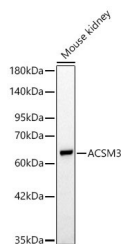
Product Type	Primary antibodies
Short Description	
Applications	WB/ELISA
Host/Source	Rabbit
Reactivity	Mouse

PRODUCT PROPERTIES

Clonality	Polyclonal
Clone ID	
Concentration	Lot specific
Conjugation	Unconjugated
Purification	Affinity purification
Dilution Range	WB:1:500-1:1000 ELISA:Recommended starting concentration is 1 μ g/mL. Please optimize the concentration based on your specific assay requirements.
Formulation	PBS with 0.05% Proclin300, 50% Glycerol, pH 7.3.
Isotype	IgG
Storage Instruction	Store at -20°C for up to 1 year from the date of receipt, and avoid repeat freeze-thaw cycles.

TARGET INFORMATION

Gene ID	6296
Gene Symbol	ACSM3
Uniprot ID	ACSM3_HUMAN
Immunogen	
Immunogen Region	28-130
Specificity	A synthetic peptide corresponding to a sequence within amino acids 28-130 of human ACSM3 (NP_005613.2).
Immunogen Sequence	LHKDNRTATPQNFSNYESMK QDFKLGPIEYFNFAKDVLDQ WTDKEKAGKKPSNPAFWWIN RNGEEMRWSFEELGSLSRKF ANILSEACSLQRGDRVILIL PRV



Western blot analysis of lysates from Mouse kidney using ACSM3 Rabbit polyclonal antibody (STJ11105568) at 1:1000 dilution. Secondary antibody:HRP Goat Anti-Rabbit IgG (H+L) (STJS000856) at 1:10000 dilution. Lysates/proteins: 25 μ g per lane. Blocking buffer: 3% nonfat dry milk in TBST. Detection:ECL Basic Kit. Exposure time:90s.

This product is suitable for in-vitro studies under the RESEARCH USE ONLY [RUO] licence. This product must not be used as for diagnostic or other medical purposes.
St John's Laboratory Ltd, Knowledge Dock Business Centre, University Way, London, E16 2RD | Tel: 0208 223 3081