

**Anti-KDM7A antibody (840-941) (STJ11105555)**  
STJ11105555

**GENERAL INFORMATION**

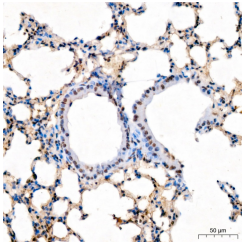
<b>Product Type</b>	Primary antibodies
<b>Short Description</b>	
<b>Applications</b>	IHC-P/ELISA
<b>Host/Source</b>	Rabbit
<b>Reactivity</b>	Human/Mouse/Rat

**PRODUCT PROPERTIES**

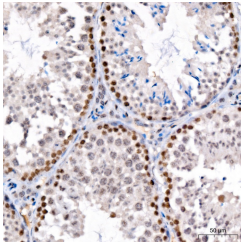
<b>Clonality</b>	Polyclonal
<b>Clone ID</b>	
<b>Concentration</b>	Lot specific
<b>Conjugation</b>	Unconjugated
<b>Purification</b>	Affinity purification
<b>Dilution Range</b>	IHC-P:1:50-1:200 ELISA:Recommended starting concentration is 1 Mu g/mL. Please optimize the concentration based on your specific assay requirements.
<b>Formulation</b>	PBS with 0.05% Proclin300, 50% Glycerol, pH 7.3.
<b>Isotype</b>	IgG
<b>Storage Instruction</b>	Store at -20°C for up to 1 year from the date of receipt, and avoid repeat freeze-thaw cycles.

**TARGET INFORMATION**

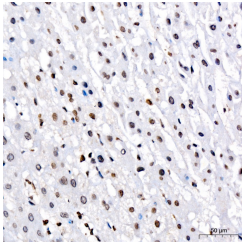
<b>Gene ID</b>	80853
<b>Gene Symbol</b>	KDM7A
<b>Uniprot ID</b>	KDM7A_HUMAN
<b>Immunogen</b>	
<b>Immunogen Region</b>	840-941
<b>Specificity</b>	A synthetic peptide corresponding to a sequence within amino acids 840-941 of human KDM7A (NP_085150.1).
<b>Immunogen Sequence</b>	VQSRNYVDSSGSSLQNGKYM QNSNLTSGACQISNGSLSP E RPVGETSFSVPLHPTKRPAS NPPPISNQATKGKRPKKGMA TAKQRLGKILKLNRRNGHARF FV



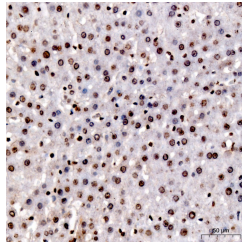
Immunohistochemistry analysis of KDM7A in paraffin-embedded mouse lung tissue using KDM7A Rabbit polyclonal antibody (STJ11105555) at a dilution of 1:100 (40x lens). High pressure antigen retrieval was performed with 0.01 M citrate buffer (pH 6.0) prior to immunohistochemistry staining.



Immunohistochemistry analysis of KDM7A in paraffin-embedded mouse testis tissue using KDM7A Rabbit polyclonal antibody (STJ11105555) at a dilution of 1:100 (40x lens). High pressure antigen retrieval was performed with 0.01 M citrate buffer (pH 6.0) prior to immunohistochemistry staining.



Immunohistochemistry analysis of KDM7A in paraffin-embedded human liver cancer tissue using KDM7A Rabbit polyclonal antibody (STJ11105555) at a dilution of 1:100 (40x lens). High pressure antigen retrieval was performed with 0.01 M citrate buffer (pH 6.0) prior to immunohistochemistry staining.



Immunohistochemistry analysis of KDM7A in paraffin-embedded rat liver tissue using KDM7A Rabbit polyclonal antibody (STJ11105555) at a dilution of 1:100 (40x lens). High pressure antigen retrieval was performed with 0.01 M citrate buffer (pH 6.0) prior to immunohistochemistry staining.

This product is suitable for in-vitro studies under the RESEARCH USE ONLY [RUO] licence. This product must not be used as for diagnostic or other medical purposes.  
St John's Laboratory Ltd, Knowledge Dock Business Centre, University Way, London, E16 2RD | Tel: 0208 223 3081