

Anti-Recombinant-SLC22A8 antibody (32-123) (STJ11105537)

STJ11105537

GENERAL INFORMATION

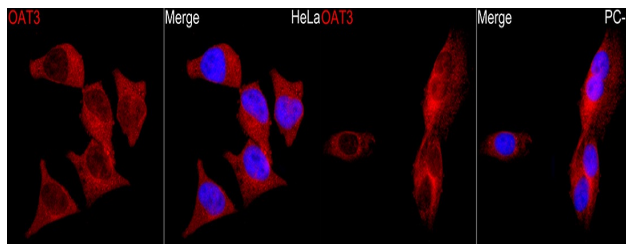
Product Type	Primary antibodies
Short Description	
Applications	IF/ICC/ELISA
Host/Source	Rabbit
Reactivity	Human

PRODUCT PROPERTIES

Clonality	Polyclonal
Clone ID	
Concentration	Lot specific
Conjugation	Unconjugated
Purification	Affinity purification
Dilution Range	IF/ICC: 1:50-1:200 ELISA: Recommended starting concentration is 1 µg/mL. Please optimize the concentration based on your specific assay requirements.
Formulation	PBS with 0.05% Proclin300, 50% Glycerol, pH 7.3.
Isotype	IgG
Storage Instruction	Store at -20°C for up to 1 year from the date of receipt, and avoid repeat freeze-thaw cycles.

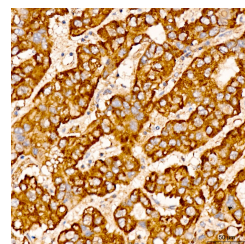
TARGET INFORMATION

Gene ID	9376
Gene Symbol	SLC22A8
Uniprot ID	S22A8_HUMAN
Immunogen	
Immunogen Region	32-123
Specificity	Recombinant Protein corresponding to a sequence within amino acids 32-123 of human OAT3 (NP_004245.2).
Immunogen Sequence	ANHNLLQIFTAATPVHHCPR PHNASTGPWVLPMPNGKPE RCLRFVHPPNASLPNDTQRA MEPCLDGWVYNSTKDSIVTE WDLVCNSNKLKE

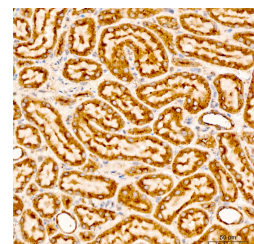


Immunofluorescence analysis of HeLa cells using A OAT3 Rabbit polyclonal antibody (STJ11105537) at a dilution of 1:100 (40x lens). Secondary antibody: Cy3 Goat Anti-Rabbit IgG (H+L) at 1:500 dilution. Blue: DAPI for nuclear staining.

Immunofluorescence analysis of PC-3 cells using A OAT3 Rabbit polyclonal antibody (STJ11105537) at a dilution of 1:100 (40x lens). Secondary antibody: Cy3 Goat Anti-Rabbit IgG (H+L) at 1:500 dilution. Blue: DAPI for nuclear staining.



Immunohistochemistry analysis of CHCHD4 in paraffin-embedded human liver cancer tissue using A CHCHD4 Rabbit polyclonal antibody at a dilution of 1:100 (40x lens). High pressure antigen retrieval was performed with 0.01 M citrate buffer (pH 6.0) prior to immunohistochemistry staining.



Immunohistochemistry analysis of CHCHD4 in paraffin-embedded rat kidney tissue using A CHCHD4 Rabbit polyclonal antibody at a dilution of 1:100 (40x lens). High pressure antigen retrieval was performed with 0.01 M citrate buffer (pH 6.0) prior to immunohistochemistry staining.

This product is suitable for in-vitro studies under the RESEARCH USE ONLY [RUO] licence. This product must not be used as for diagnostic or other medical purposes.
St John's Laboratory Ltd, Knowledge Dock Business Centre, University Way, London, E16 2RD | Tel: 0208 223 3081