

# Anti-CHCHD4 antibody (1-105) (STJ11105536)

STJ11105536

## GENERAL INFORMATION

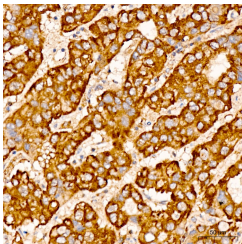
<b>Product Type</b>	Primary antibodies
<b>Short Description</b>	
<b>Applications</b>	WB/IHC-P/ELISA
<b>Host/Source</b>	Rabbit
<b>Reactivity</b>	Human/Rat

## PRODUCT PROPERTIES

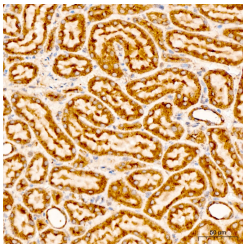
<b>Clonality</b>	Polyclonal
<b>Clone ID</b>	
<b>Concentration</b>	Lot specific
<b>Conjugation</b>	Unconjugated
<b>Purification</b>	Affinity purification
<b>Dilution Range</b>	WB:1:500-1:1000 IHC-P:1:50-1:200 ELISA:Recommended starting concentration is 1 µg/mL. Please optimize the concentration based on your specific assay requirements.
<b>Formulation</b>	PBS with 0.05% Proclin300, 50% Glycerol, pH 7.3.
<b>Isotype</b>	IgG
<b>Storage</b>	Store at -20°C for up to 1 year from the date of receipt, and avoid repeat freeze-thaw cycles.
<b>Instruction</b>	

## TARGET INFORMATION

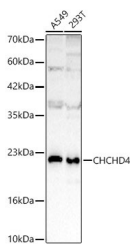
<b>Gene ID</b>	131474
<b>Gene Symbol</b>	CHCHD4
<b>Uniprot ID</b>	M1A40_HUMAN
<b>Immunogen</b>	
<b>Immunogen Region</b>	1-105
<b>Specificity</b>	Recombinant fusion protein containing a sequence corresponding to amino acids 1-105 of human CHCHD4 (NP_001091972.1). MSYCRQEGKDRIFVTKEDH ETPSSAELVADDPNDPYEEH GLILPNGNINWNCPLGGMA SGPCGEQFKSAFSCFHYSTE
<b>Immunogen Sequence</b>	EIKGSDCVDQFRAMQECMQK YPDLY



Immunohistochemistry analysis of CHCHD4 in paraffin-embedded human liver cancer tissue using CHCHD4 Rabbit polyclonal antibody (STJ11105536) at a dilution of 1:100 (40x lens). High pressure antigen retrieval was performed with 0.01 M citrate buffer (pH 6.0) prior to immunohistochemistry staining.



Immunohistochemistry analysis of CHCHD4 in paraffin-embedded rat kidney tissue using CHCHD4 Rabbit polyclonal antibody (STJ11105536) at a dilution of 1:100 (40x lens). High pressure antigen retrieval was performed with 0.01 M citrate buffer (pH 6.0) prior to immunohistochemistry staining.



Western blot analysis of various lysates using CHCHD4 Rabbit polyclonal antibody (STJ11105536) at 1:1000 dilution. Secondary antibody: HRP Goat Anti-Rabbit IgG (H+L) (STJS000856) at 1:10000 dilution. Lysates/proteins: 25 µg per lane. Blocking buffer: 3% nonfat dry milk in TBST. Detection: ECL Basic Kit. Exposure time: 45s.

This product is suitable for in-vitro studies under the RESEARCH USE ONLY [RUO] licence. This product must not be used as for diagnostic or other medical purposes.  
St John's Laboratory Ltd, Knowledge Dock Business Centre, University Way, London, E16 2RD | Tel: 0208 223 3081