

Anti-PLCG2 antibody (701-800) [S5529RM] (STJ11105529)

STJ11105529

GENERAL INFORMATION

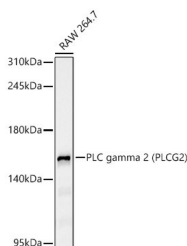
Product Type	Primary antibodies
Short Description	
Applications	WB/ELISA
Host/Source	Rabbit
Reactivity	Human/Mouse

PRODUCT PROPERTIES

Clonality	Monoclonal
Clone ID	S5529RM
Concentration	Lot specific
Conjugation	Unconjugated
Purification	Affinity purification
Dilution Range	WB:1:500-1:1000 ELISA:Recommended starting concentration is 1 Mu g/mL. Please optimize the concentration based on your specific assay requirements.
Formulation	PBS with 0.05% Proclin300, 0.05% BSA, 50% Glycerol, pH 7.3.
Isotype	IgG
Storage Instruction	Store at -20°C for up to 1 year from the date of receipt, and avoid repeat freeze-thaw cycles.

TARGET INFORMATION

Gene ID	5336
Gene Symbol	PLCG2
Uniprot ID	PLCG2_HUMAN
Immunogen	
Immunogen	701-800
Region	
Specificity	A synthetic peptide corresponding to a sequence within amino acids 701-800 of PLC gamma 2 (PLCG2) (NP_002652.2)
Immunogen	HFVLGTSAYFESLVELVSY EKHSLYRKMLRYPVTPPELL ERYNMERDINSLYDVSRMYV DPSEINPSMPQRTVKALYDY
Sequence	KAKRSELSFCRGALIHNV



Western blot analysis of lysates from RAW 264.7 cells using PLC gamma 2 (PLCG2) Rabbit monoclonal antibody (STJ11105529) at 1:1000 dilution. Secondary antibody: HRP Goat Anti-Rabbit IgG (H+L) (STJS000856) at 1:10000 dilution. Lysates/proteins: 25ug per lane. Blocking buffer: 3% nonfat dry milk in TBST. Detection: ECL Basic Kit. Exposure time: 90s.

This product is suitable for in-vitro studies under the RESEARCH USE ONLY [RUO] licence. This product must not be used as for diagnostic or other medical purposes.
St John's Laboratory Ltd, Knowledge Dock Business Centre, University Way, London, E16 2RD | Tel: 0208 223 3081