

## Anti-Acetyl-Histone H2B-K20 antibody (STJ11105525)

STJ11105525

### GENERAL INFORMATION

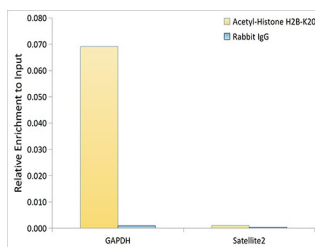
<b>Product Type</b>	Primary antibodies
<b>Short Description</b>	
<b>Applications</b>	WB/ELISA/ChIP
<b>Host/Source</b>	Rabbit
<b>Reactivity</b>	Human/Mouse/Rat

### PRODUCT PROPERTIES

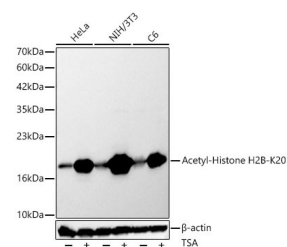
<b>Clonality</b>	Polyclonal
<b>Clone ID</b>	
<b>Concentration</b>	Lot specific
<b>Conjugation</b>	Unconjugated
<b>Purification</b>	Affinity purification
<b>Dilution Range</b>	WB:1:500-1:1000 ELISA:Recommended starting concentration is 1 Mu g/mL. Please optimize the concentration based on your specific assay requirements.
<b>Formulation</b>	ChIP:5 Mu g antibody for 5 Mu g-10 Mu g of Chromatin
<b>Isotype</b>	IgG
<b>Storage Instruction</b>	PBS with 0.05% Proclin300, 50% Glycerol, pH 7.3. Store at -20°C for up to 1 year from the date of receipt, and avoid repeat freeze-thaw cycles.

### TARGET INFORMATION

<b>Gene ID</b>	8349 3017/8339/8343/8344/8346/8347
<b>Gene Symbol</b>	H2BC21 H2BC4.H2BC6.H2BC7.H2BC8.H2BC10
<b>Uniprot ID</b>	H2B2E_HUMAN H2B1C_HUMAN
<b>Immunogen</b>	
<b>Immunogen Region</b>	
<b>Specificity</b>	A synthetic acetylated peptide around K20 of human Histone H2B (NP_003519.1).
<b>Immunogen Sequence</b>	



Chromatin immunoprecipitation was performed with cross-linked chromatin from 293F cells, using Acetyl-Histone H2B-K20 Rabbit polyclonal antibody (STJ11105525) and rabbit IgG. The amount of immunoprecipitated DNA was checked by quantitative PCR. Histogram compares the ratio of the immunoprecipitated DNA versus the input.



Western blot analysis of various lysates using Acetyl-Histone H2B-K20 Rabbit polyclonal antibody (STJ11105525) at 1:500 dilution. HeLa cells, NIH/3T3 cells and C6 cells were treated by TSA (1 Mu M) at 37 °C for 18 hours. Secondary antibody:HRP Goat Anti-Rabbit IgG (H+L) (STJS000856) at 1:10000 dilution. Lysates/proteins: 25A Mu g per lane. Blocking buffer: 3% nonfat dry milk in TBST. Detection:ECL Basic Kit. Exposure time: 20s.

This product is suitable for in-vitro studies under the RESEARCH USE ONLY [RUO] licence. This product must not be used as for diagnostic or other medical purposes.  
St John's Laboratory Ltd, Knowledge Dock Business Centre, University Way, London, E16 2RD | Tel: 0208 223 3081