

Anti-LHB antibody (21-141) (STJ11105501)

STJ11105501

GENERAL INFORMATION

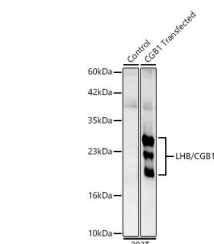
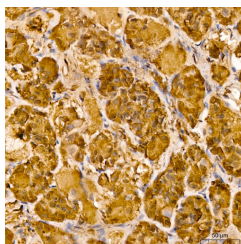
Product Type	Primary antibodies
Short Description	
Applications	WB/IHC-P/ELISA
Host/Source	Rabbit
Reactivity	Human

PRODUCT PROPERTIES

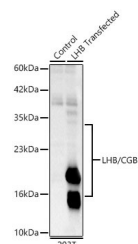
Clonality	Polyclonal
Clone ID	
Concentration	Lot specific
Conjugation	Unconjugated
Purification	Affinity purification
Dilution Range	WB:1:500-1:1000 IHC-P:1:50-1:200 ELISA:Recommended starting concentration is 1 µg/mL. Please optimize the concentration based on your specific assay requirements.
Formulation	PBS with 0.05% Proclin300, 50% Glycerol, pH 7.3.
Isotype	IgG
Storage Instruction	Store at -20°C for up to 1 year from the date of receipt, and avoid repeat freeze-thaw cycles.

TARGET INFORMATION

Gene ID	3972
Gene Symbol	LHB
Uniprot ID	LSHB_HUMAN
Immunogen	
Immunogen Region	21-141
Specificity	Recombinant Protein corresponding to a sequence within amino acids 21-141 of human LHB (NP_000885.1).
Immunogen Sequence	SREPLRPWCHPINAILAVEK EGCPVCITVNTTICAGYCP MMRVLQAVLPPLQVQVCTYR DVRFESIRLPGCPRGVDPVV SFPVALSCRCGPCRRSTSDC GGPKDHPLTCDHPQLSGLLF L



Immunohistochemistry analysis of LHB/CGβ1 in paraffin-embedded human pituitary gland tissue using Anti-LHB/CGβ1 Rabbit polyclonal antibody (STJ11105501) at a dilution of 1:100 (40x lens). High pressure antigen retrieval was performed with 0.01 M Tris-EDTA buffer (pH 9.0) prior to immunohistochemistry staining.



Western blot analysis of lysates from wild type (WT) and 293T cells transfected with LHB/CGβ1 using a Lutropin subunit beta Rabbit polyclonal antibody (STJ11105501) at a 1:800 dilution. Secondary antibody: HRP-Goat Anti-Rabbit IgG (H+L) (STJ5000856) at 1:10000 dilution. Lysates/proteins: 25 µg per lane. Blocking buffer: 3% nonfat dry milk in TBST. Detection: ECL Basic Kit. Exposure time: 45s.

This product is suitable for in-vitro studies under the RESEARCH USE ONLY [RUO] licence. This product must not be used as for diagnostic or other medical purposes.
St John's Laboratory Ltd, Knowledge Dock Business Centre, University Way, London, E16 2RD | Tel: 0208 223 3081