

Anti-IGF2 antibody (70-180) (STJ11105485)

GENERAL INFORMATION

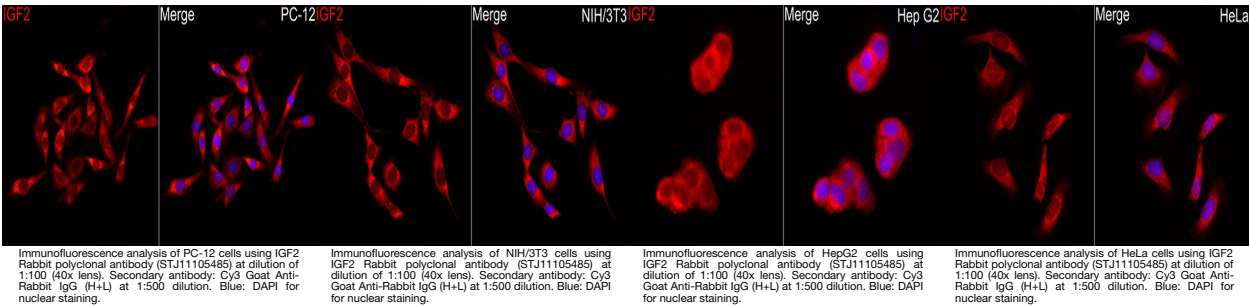
Product Type	Primary antibodies
Short Description	
Applications	IF/ICC
Host/Source	Rabbit
Reactivity	Human/Mouse/Rat

PRODUCT PROPERTIES

Clonality	Polyclonal
Clone ID	
Concentration	Lot specific
Conjugation	Unconjugated
Purification	Affinity purification
Dilution Range	IF/ICC: 1:50-1:200
Formulation	PBS with 0.05% Proclin300, 50% Glycerol, pH 7.3.
Isotype	IgG
Storage	Store at -20°C for up to 1 year from the date of receipt, and avoid repeat freeze-thaw cycles.
Instruction	

TARGET INFORMATION

Gene ID	3481
Gene Symbol	IGF2
Uniprot ID	IGF2_HUMAN
Immunogen	
Immunogen Region	70-180
Specificity	A synthetic peptide corresponding to a sequence within amino acids 70-180 of human IGF2 (P01344).
Immunogen Sequence	CCFRSCDLALLECYCATPAK SERDVSTPPTVLPDNFPRYP VGKFFQYDTWKQSTQRLRRG LPALLRARRGHVLAKELEAF REAKRHRPLIALPTQDPAHG GAPPENASNRK



This product is suitable for in-vitro studies under the RESEARCH USE ONLY [RUO] licence. This product must not be used as for diagnostic or other medical purposes.
St John's Laboratory Ltd, Knowledge Dock Business Centre, University Way, London, E16 2RD | Tel: 0208 223 3081