

Anti-PRELID3B antibody (80-180) (STJ11105451)

STJ11105451

GENERAL INFORMATION

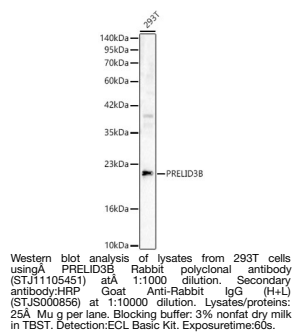
| | |
|--------------------------|--------------------|
| Product Type | Primary antibodies |
| Short Description | |
| Applications | WB/ELISA |
| Host/Source | Rabbit |
| Reactivity | Human |

PRODUCT PROPERTIES

| | |
|----------------------------|--|
| Clonality | Polyclonal |
| Clone ID | |
| Concentration | Lot specific |
| Conjugation | Unconjugated |
| Purification | Affinity purification |
| Dilution Range | WB:1:500-1:1000 ELISA:Recommended starting concentration is 1 Mu g/mL. Please optimize the concentration based on your specific assay requirements. |
| Formulation | PBS with 0.05% Proclin300, 50% Glycerol, pH 7.3. |
| Isotype | IgG |
| Storage Instruction | Store at -20°C for up to 1 year from the date of receipt, and avoid repeat freeze-thaw cycles. |

TARGET INFORMATION

| | |
|---------------------------|--|
| Gene ID | 51012 |
| Gene Symbol | PRELID3B |
| Uniprot ID | PLD3B_HUMAN |
| Immunogen | |
| Immunogen Region | 80-180 |
| Specificity | A synthetic peptide corresponding to a sequence within amino acids 80-180 of human PRELID3B (NP_057129.2). |
| Immunogen Sequence | EHSVVDVPVEKTMELKSTNIS FTNMVSVDERLIYKPHPQDP EKTVLQTQEAITVKGVSLSS YLEGLMASTISSNASKGREAMEWVIHKLNAEIEELTASAR G |



This product is suitable for in-vitro studies under the RESEARCH USE ONLY [RUO] licence. This product must not be used as for diagnostic or other medical purposes.
St John's Laboratory Ltd, Knowledge Dock Business Centre, University Way, London, E16 2RD | Tel: 0208 223 3081