

## Anti-ACSL1 antibody (590-698) (STJ11105445)

STJ11105445

### GENERAL INFORMATION

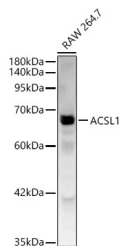
|                          |                    |
|--------------------------|--------------------|
| <b>Product Type</b>      | Primary antibodies |
| <b>Short Description</b> |                    |
| <b>Applications</b>      | WB/ELISA           |
| <b>Host/Source</b>       | Rabbit             |
| <b>Reactivity</b>        | Mouse              |

### PRODUCT PROPERTIES

|                       |   |
|-----------------------|---|
| <b>Clonality</b>      | Polyclonal  |
| <b>Clone ID</b>       |   |
| <b>Concentration</b>  | Lot specific  |
| <b>Conjugation</b>    | Unconjugated  |
| <b>Purification</b>   | Affinity purification   |
| <b>Dilution Range</b> | WB:1:1000-1:5000<br>ELISA:Recommended starting concentration is 1 Mu g/mL. Please optimize the concentration based on your specific assay requirements. |
| <b>Formulation</b>    | PBS with 0.05% Proclin300, 50% Glycerol, pH 7.3.  |
| <b>Isotype</b>        | IgG   |
| <b>Storage</b>        | Store at -20°C for up to 1 year from the date of receipt, and avoid repeat freeze-thaw cycles.  |
| <b>Instruction</b>    |   |

### TARGET INFORMATION

|                           |  |
|---------------------------|--|
| <b>Gene ID</b>            | 2180   |
| <b>Gene Symbol</b>        | ACSL1  |
| <b>Uniprot ID</b>         | ACSL1_HUMAN  |
| <b>Immunogen</b>          |  |
| <b>Immunogen Region</b>   | 590-698  |
| <b>Specificity</b>        | A synthetic peptide corresponding to a sequence within amino acids 590-698 of human ACSL1 (NP_001986.2).               |
| <b>Immunogen Sequence</b> | GESLQAFLLIAIVVPDVETLC SWAQKRGFGSFEELCRNKD VKKAILEDMVRLLGKDSGLKP FEQVKGITLHPELFSIDNGL<br>LPTMTKAKRPELRNYFRSQI DDLYSTIKV |



Western blot analysis of lysates from RAW 264.7 cells using ACSL1 Rabbit polyclonal antibody (STJ11105445) at 1:2000 dilution. Secondary antibody:HRP Goat Anti-Rabbit IgG (H+L) (STJS000856) at 1:10000 dilution. Lysates/proteins: 25A Mu g per lane. Blocking buffer: 3% nonfat dry milk in TBST. Detection:ECL Basic Kit. Exposure time:30s.

This product is suitable for in-vitro studies under the RESEARCH USE ONLY [RUO] licence. This product must not be used as for diagnostic or other medical purposes.  
St John's Laboratory Ltd, Knowledge Dock Business Centre, University Way, London, E16 2RD | Tel: 0208 223 3081