

Anti-PINK1 antibody (200-300) (STJ11105442)
STJ11105442

GENERAL INFORMATION

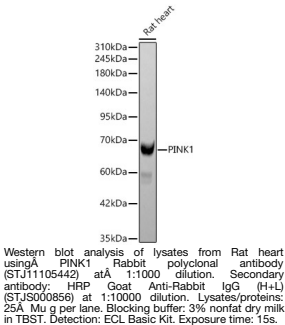
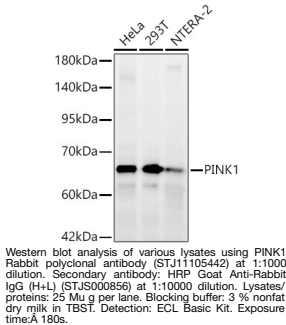
Product Type	Primary antibodies
Short Description	
Applications	WB
Host/Source	Rabbit
Reactivity	Human/Rat

PRODUCT PROPERTIES

Clonality	Polyclonal
Clone ID	
Concentration	Lot specific
Conjugation	Unconjugated
Purification	Affinity purification
Dilution Range	WB:1:500-1:1000
Formulation	PBS with 0.05% Proclin300, 50% Glycerol, pH 7.3.
Isotype	IgG
Storage	Store at -20°C for up to 1 year from the date of receipt, and avoid repeat freeze-thaw cycles.
Instruction	

TARGET INFORMATION

Gene ID	65018
Gene Symbol	PINK1
Uniprot ID	PINK1_HUMAN
Immunogen	
Immunogen Region	200-300
Specificity	A synthetic peptide corresponding to a sequence within amino acids 200-300 of human PINK1 (NP_115785.1).
Immunogen Sequence	APGEGQERAPGAPAFPLAIK MMWNISAGSSSEAILNTMSQ ELVPASRVALAGEYGAVTYR KSKRGPKQLAPHNIRVLR AFTSSVPLLPALVDYPDVL P



This product is suitable for in-vitro studies under the RESEARCH USE ONLY [RUO] licence. This product must not be used as for diagnostic or other medical purposes.
St John's Laboratory Ltd, Knowledge Dock Business Centre, University Way, London, E16 2RD | Tel: 0208 223 3081