

Anti-PCOLCE antibody (304-449) [S5435RM] (STJ11105435)

STJ11105435

GENERAL INFORMATION

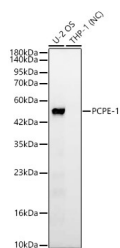
Product Type	Primary antibodies
Short Description	
Applications	WB/ELISA
Host/Source	Rabbit
Reactivity	Human/Mouse/Rat

PRODUCT PROPERTIES

Clonality	Monoclonal
Clone ID	S5435RM
Concentration	Lot specific
Conjugation	Unconjugated
Purification	Affinity purification
Dilution	WB:1:1000-1:4000
Range	ELISA:Recommended starting concentration is 1 µg/mL. Please optimize the concentration based on your specific assay requirements.
Formulation	PBS with 0.05% Proclin300, 0.05% BSA, 50% Glycerol, pH 7.3.
Isotype	IgG
Storage	Store at -20°C for up to 1 year from the date of receipt, and avoid repeat freeze-thaw cycles.
Instruction	

TARGET INFORMATION

Gene ID	5118
Gene Symbol	PCOLCE
Uniprot ID	PCOC1_HUMAN
Immunogen	
Immunogen Region	304-449
Specificity	Recombinant fusion protein containing a sequence corresponding to amino acids 304-449 of human TLR4 (NP_002584.2). EKTEESPSAPDAPTCPKQCR RTGTLQSNFCASSLVVTV KSMVREPGGLAVTVSLIGA YKTGGLDLPSPTGASLKFY
Immunogen Sequence	VPCKQCPPMKKGVSYLLMGQ VEENRGPVLPPEFVVLHRP NQDQILTNLKSRKCPSPVR AAASQD



Western blot analysis of various lysates, using PCPE-1 Rabbit monoclonal antibody (STJ11105435) at 1:1000 dilution. Secondary antibody: HRP Goat Anti-Rabbit IgG (H+L) (STJS000856) at 1:10000 dilution. Lysates/proteins: 25µg per lane. Blocking buffer: 3% nonfat dry milk in TBST. Detection: ECL Basic Kit. Negative control (NC): THP-1. Exposure time: 30s.

This product is suitable for in-vitro studies under the RESEARCH USE ONLY [RUO] licence. This product must not be used as for diagnostic or other medical purposes.
St John's Laboratory Ltd, Knowledge Dock Business Centre, University Way, London, E16 2RD | Tel: 0208 223 3081