

Anti-CD276 antibody (29-245) (STJ11105431)
STJ11105431

GENERAL INFORMATION

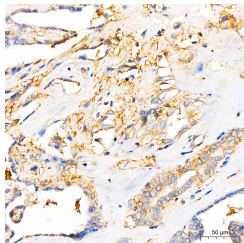
Product Type	Primary antibodies
Short Description	
Applications	WB/IHC-P/ELISA
Host/Source	Rabbit
Reactivity	Human

PRODUCT PROPERTIES

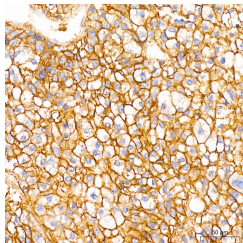
Clonality	Polyclonal
Clone ID	
Concentration	Lot specific
Conjugation	Unconjugated
Purification	Affinity purification
Dilution	WB:1:1000-1:5000
Range	IHC-P:1:50-1:200
	ELISA:Recommended starting concentration is 1 Mu g/mL. Please optimize the concentration based on your specific assay requirements.
Formulation	PBS with 0.05% Proclin300, 50% Glycerol, pH 7.3.
Isotype	IgG
Storage Instruction	Store at -20°C for up to 1 year from the date of receipt, and avoid repeat freeze-thaw cycles.

TARGET INFORMATION

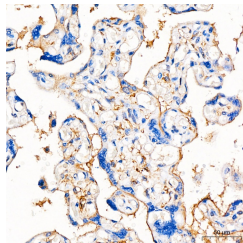
Gene ID	80381
Gene Symbol	CD276
Uniprot ID	CD276_HUMAN
Immunogen	
Immunogen Region	29-245
Specificity	Recombinant Protein corresponding to a sequence within amino acids 29-245 of human CD276 (NP_079516.1).
Immunogen Sequence	LEVQVPEDPVVALVGTDATL CCSFSPEPGFSLAQLNLIWQ LTDTKQLVHSFAEGQDQGS A YANRTALFPDLLAQGNASLR LQRRVRVADEGSFTCFVSIRD FGSAAVSLQVAAPYSKPSMT LEPNKDLRPGDVTITC SSY RGYPEAEVFWQDGGQGVPLTG NVTTSQMANEQGLFDVH SVL RWVLGANGTYSCLVRNPVLQ QDAHGSVTTTGQPMFTP



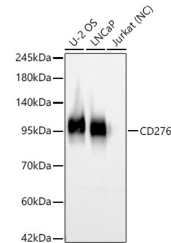
Immunohistochemistry analysis of CD276 in paraffin-embedded human thyroid cancer tissue using CD276 Rabbit polyclonal antibody (STJ11105431) at a dilution of 1:200 (40x lens). High pressure antigen retrieval was performed with 0.01 M citrate buffer (pH 6.0) prior to immunohistochemistry staining.



Immunohistochemistry analysis of CD276 in paraffin-embedded human liver cancer tissue using CD276 Rabbit polyclonal antibody (STJ11105431) at a dilution of 1:200 (40x lens). High pressure antigen retrieval was performed with 0.01 M citrate buffer (pH 6.0) prior to immunohistochemistry staining.



Immunohistochemistry analysis of CD276 in paraffin-embedded human placenta tissue using CD276 Rabbit polyclonal antibody (STJ11105431) at a dilution of 1:200 (40x lens). High pressure antigen retrieval was performed with 0.01 M citrate buffer (pH 6.0) prior to immunohistochemistry staining.



Western blot analysis of various lysates, using CD276 Rabbit polyclonal antibody (STJ11105431) at 1:2000 dilution. Secondary antibody: HRP Goat Anti-Rabbit IgG (H+L) (STJ5000896) at 1:10000 dilution. Lysates/proteins: 25ug per lane. Blocking buffer: 3% nonfat dry milk in TBST. Detection: ECL Basic Kit. Negative control (NC) Jurkat. Exposure time: 1s.

This product is suitable for in-vitro studies under the RESEARCH USE ONLY [RUO] licence. This product must not be used as for diagnostic or other medical purposes.
St John's Laboratory Ltd, Knowledge Dock Business Centre, University Way, London, E16 2RD | Tel: 0208 223 3081