

Anti-BTN2A1 antibody (29-130) (STJ11105420)

STJ11105420

GENERAL INFORMATION

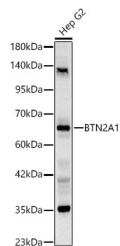
Product Type	Primary antibodies
Short Description	
Applications	WB/ELISA
Host/Source	Rabbit
Reactivity	Human

PRODUCT PROPERTIES

Clonality	Polyclonal
Clone ID	
Concentration	Lot specific
Conjugation	Unconjugated
Purification	Affinity purification
Dilution Range	WB:1:100-1:500 ELISA:Recommended starting concentration is 1 Mu g/mL. Please optimize the concentration based on your specific assay requirements.
Formulation	PBS with 0.05% Proclin300, 50% Glycerol, pH 7.3.
Isotype	IgG
Storage	Store at -20°C for up to 1 year from the date of receipt, and avoid repeat freeze-thaw cycles.
Instruction	

TARGET INFORMATION

Gene ID	11120
Gene Symbol	BTN2A1
Uniprot ID	BT2A1_HUMAN
Immunogen	
Immunogen Region	29-130
Specificity	Recombinant Protein corresponding to a sequence within amino acids 29-130 of human BTN2A1 (NP_008980.1).
Immunogen Sequence	QFIVVGPTDPILATVGENTT LRCHLSPEKNAEDMEVRWFR SQFSPAVFVYKGGRETEEQ MEEYRGRTTFVSKDISRGSV ALVIHNITAQENGTYRCYFQ EG



Western blot analysis of lysates from Hep G2 cells, using BTN2A1 Rabbit polyclonal antibody (STJ11105420) at 1:400 dilution. Secondary antibody: HRP Goat Anti-Rabbit IgG (H+L) (STJSD00856) at 1:10000 dilution. Lysates/proteins: 25ug per lane. Blocking buffer: 3% nonfat dry milk in TBST. Detection: ECL Basic Kit. Exposure time: 120s.

This product is suitable for in-vitro studies under the RESEARCH USE ONLY [RUO] licence. This product must not be used as for diagnostic or other medical purposes.
St John's Laboratory Ltd, Knowledge Dock Business Centre, University Way, London, E16 2RD | Tel: 0208 223 3081