

Anti-PIGF antibody (24-158) (STJ11105414)

STJ11105414

GENERAL INFORMATION

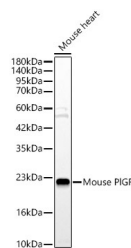
Product Type	Primary antibodies
Short Description	
Applications	WB/ELISA
Host/Source	Rabbit
Reactivity	Mouse

PRODUCT PROPERTIES

Clonality	Polyclonal
Clone ID	
Concentration	Lot specific
Conjugation	Unconjugated
Purification	Affinity purification
Dilution	WB:1:1000-1:5000
Range	ELISA:Recommended starting concentration is 1 μ g/mL. Please optimize the concentration based on your specific assay requirements.
Formulation	PBS with 0.05% Proclin300, 50% Glycerol, pH 7.3.
Isotype	IgG
Storage	Store at -20°C for up to 1 year from the date of receipt, and avoid repeat freeze-thaw cycles.
Instruction	

TARGET INFORMATION

Gene ID	18654
Gene Symbol	Pgf
Uniprot ID	PLGF_MOUSE
Immunogen	
Immunogen Region	24-158
Specificity	Recombinant fusion protein containing a sequence corresponding to amino acids 24-158 of mouse PIGF (NP_032853.1).
Immunogen Sequence	ALSAGNNSTEVEVVPFNEVW GRSYCRPMEKLVYILDEYPD EVSHIFSPSCVLLSRCSGCC GDEGLHCVPIKTANITMQIL KIPPNRDPHFYVEMTFSQDV LCECRPILETTKAERRKTKG KRKRSRNSQTTEPH



Western blot analysis of lysates from Mouse heart, using Mouse PIGF Rabbit polyclonal antibody (STJ11105414) at 1:2000 dilution. Secondary antibody: HRP Goat Anti-Rabbit IgG (H+L) (STJSD00856) at 1:10000 dilution. Lysates/proteins: 25 μ g per lane. Blocking buffer: 3% nonfat dry milk in TBST. Detection: ECL Basic Kit. Exposure time: 180s.

This product is suitable for in-vitro studies under the RESEARCH USE ONLY [RUO] licence. This product must not be used as for diagnostic or other medical purposes.
St John's Laboratory Ltd, Knowledge Dock Business Centre, University Way, London, E16 2RD | Tel: 0208 223 3081