

Anti-AASS antibody (480-600) (STJ11105411)
STJ11105411

GENERAL INFORMATION

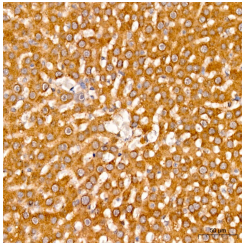
| | |
|--------------------------|--------------------|
| Product Type | Primary antibodies |
| Short Description | |
| Applications | WB/IHC-P/ELISA |
| Host/Source | Rabbit |
| Reactivity | Human/Mouse/Rat |

PRODUCT PROPERTIES

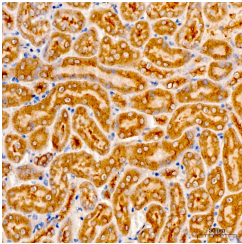
| | |
|----------------------------|------------------------------------------------------------------------------------------------------------------------------------------------------------------------|
| Clonality | Polyclonal |
| Clone ID | |
| Concentration | Lot specific |
| Conjugation | Unconjugated |
| Purification | Affinity purification |
| Dilution Range | WB:1:50-1:200 IHC-P:1:50-1:200 ELISA:Recommended starting concentration is 1 µg/mL. Please optimize the concentration based on your specific assay requirements. |
| Formulation | PBS with 0.05% Proclin300, 50% Glycerol, pH 7.3. |
| Isotype | IgG |
| Storage Instruction | Store at -20°C for up to 1 year from the date of receipt, and avoid repeat freeze-thaw cycles. |

TARGET INFORMATION

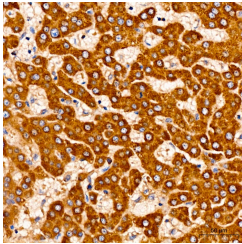
| | |
|---------------------------|-----------------------------------------------------------------------------------------------------------------------------------|
| Gene ID | 10157 |
| Gene Symbol | AASS |
| Uniprot ID | AASS_HUMAN |
| Immunogen | |
| Immunogen Region | 480-600 |
| Specificity | Recombinant fusion protein containing a sequence corresponding to amino acids 480-600 of human AASS (NP_005754.2). |
| Immunogen Sequence | RRKVLVLGSGYISEPVLEYL SRDGNIEITVGSDMKNQIEQ LGKKYNINPVSMICKQEEK LGFLVAKQDLVISLLPYVLH PLVAKACITNKVNMVTASYI TPALKELEKSVEDAGITIIG E |



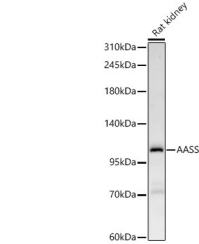
Immunohistochemistry analysis of AASS in paraffin-embedded rat liver using AASS Rabbit polyclonal antibody (STJ11105411) at dilution of 1:100 (40x lens). Perform high pressure antigen retrieval with 10 mM citrate buffer pH 6.0 before commencing with immunohistochemistry staining protocol.



Immunohistochemistry analysis of AASS in paraffin-embedded mouse kidney using AASS Rabbit polyclonal antibody (STJ11105411) at dilution of 1:100 (40x lens). Perform high pressure antigen retrieval with 10 mM citrate buffer pH 6.0 before commencing with immunohistochemistry staining protocol.



Immunohistochemistry analysis of AASS in paraffin-embedded human liver using AASS Rabbit polyclonal antibody (STJ11105411) at dilution of 1:100 (40x lens). Perform high pressure antigen retrieval with 10 mM citrate buffer pH 6.0 before commencing with immunohistochemistry staining protocol.



Western blot analysis of lysates from Rat kidney, using AASS Rabbit polyclonal antibody (STJ11105411) at 1:100 dilution. Secondary antibody: HRP Goat Anti-Rabbit IgG (H+L) (STJS000856) at 1:10000 dilution. Lysates/proteins: 25µg per lane. Blocking buffer: 3% nonfat dry milk in TBST. Detection: ECL Basic Kit. Exposure time: 180s.

This product is suitable for in-vitro studies under the RESEARCH USE ONLY [RUO] licence. This product must not be used as for diagnostic or other medical purposes.
St John's Laboratory Ltd, Knowledge Dock Business Centre, University Way, London, E16 2RD | Tel: 0208 223 3081