

**Anti-SEMG1 antibody (312-462) (STJ11105399)**  
STJ11105399

**GENERAL INFORMATION**

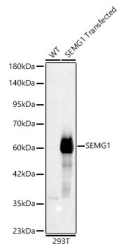
<b>Product Type</b>	Primary antibodies
<b>Short Description</b>	
<b>Applications</b>	WB/ELISA
<b>Host/Source</b>	Rabbit
<b>Reactivity</b>	Human

**PRODUCT PROPERTIES**

<b>Clonality</b>	Polyclonal
<b>Clone ID</b>	
<b>Concentration</b>	Lot specific
<b>Conjugation</b>	Unconjugated
<b>Purification</b>	Affinity purification
<b>Dilution</b>	WB:1:500-1:1000
<b>Range</b>	ELISA:Recommended starting concentration is 1 Mu g/mL. Please optimize the concentration based on your specific assay requirements.
<b>Formulation</b>	PBS with 0.05% Proclin300, 50% Glycerol, pH 7.3.
<b>Isotype</b>	IgG
<b>Storage</b>	Store at -20°C for up to 1 year from the date of receipt, and avoid repeat freeze-thaw cycles.
<b>Instruction</b>	

**TARGET INFORMATION**

<b>Gene ID</b>	6406
<b>Gene Symbol</b>	SEMG1
<b>Uniprot ID</b>	SEMG1_HUMAN
<b>Immunogen</b>	
<b>Immunogen Region</b>	312-462
<b>Specificity</b>	Recombinant fusion protein containing a sequence corresponding to amino acids 312-462 of human SEMG1 (NP_002998.1).
<b>Immunogen Sequence</b>	SSIYSQTEEKAQGKSQKQIT IPSQEQEHSQKANKISYQSS STEERRLHYGENGVQKDV SQ RSIYSQTEKLVAGKSQIQAP NPKQEPWHGENAKGESGQST NREQDLLSHEQKGRHQHGHSG GGLDIVIEQEDDSDRHLAQ HLNNDNRNPLFT



Western blot analysis of lysates from wild type (WT) and 293T cells transfected with SEMG1, using SEMG1 Rabbit polyclonal antibody (STJ11105399) at 1:400 dilution. Secondary antibody: HRP Goat Anti-Rabbit IgG (H+L) (STJ5000856) at 1:10000 dilution. Lysates/proteins: 25ug per lane. Blocking buffer: 3% nonfat dry milk in TBST. Detection: ECL Basic Kit. Exposure time: 3s.

This product is suitable for in-vitro studies under the RESEARCH USE ONLY [RUO] licence. This product must not be used as for diagnostic or other medical purposes.  
St John's Laboratory Ltd, Knowledge Dock Business Centre, University Way, London, E16 2RD | Tel: 0208 223 3081