

Anti-TRMT9B antibody (150-250) (STJ11105387)
STJ11105387

GENERAL INFORMATION

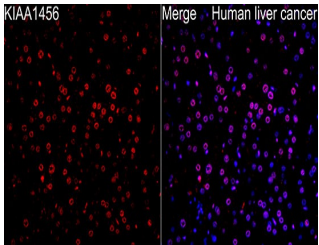
Product Type	Primary antibodies
Short Description	
Applications	WB/IHC-P/IF/ICC/ELISA
Host/Source	Rabbit
Reactivity	Human/Mouse/Rat

PRODUCT PROPERTIES

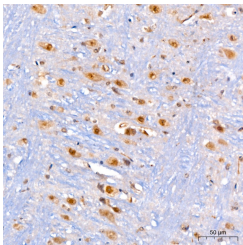
Clonality	Polyclonal
Clone ID	
Concentration	Lot specific
Conjugation	Unconjugated
Purification	Affinity purification
Dilution Range	WB:1:1000-1:5000 IHC-P:1:50-1:200 IF/ICC:1:50-1:200 ELISA:Recommended starting concentration is 1 µg/mL. Please optimize the concentration based on your specific assay requirements.
Formulation	PBS with 0.05% Proclin300, 50% Glycerol, pH 7.3.
Isotype	IgG
Storage	Store at -20°C for up to 1 year from the date of receipt, and avoid repeat freeze-thaw cycles.
Instruction	

TARGET INFORMATION

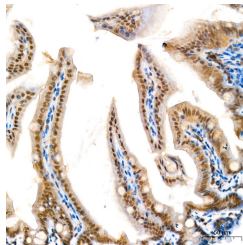
Gene ID	57604
Gene Symbol	TRMT9B
Uniprot ID	TRM9B_HUMAN
Immunogen	
Immunogen Region	150-250
Specificity	A synthetic peptide corresponding to a sequence within amino acids 150-250 of human KIAA1456 (NP_065895.2).
Immunogen Sequence	VWAMEGKNRHFEKQDVLVPW NRALCSQLFSESSQSGRK RQ CGYPERGHPYHPPCSECSCS VCFKEQC GSKRSHSVGYEPA MARTCFANISKEGEEYGFY STLGKSFRSRW



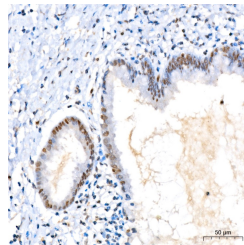
Immunofluorescence analysis of human liver cancer cells using KIAA1456 Rabbit polyclonal antibody (STJ11105387) at dilution of 1:200 (40x lens). Perform high pressure antigen retrieval with 10 mM citrate buffer pH 6.0 before commencing with IF staining protocol. Secondary antibody: Cy3 Goat Anti-Rabbit IgG (H+L) at 1:500 dilution. Blue: DAPI for nuclear staining.



Immunohistochemistry analysis of KIAA1456 in paraffin-embedded Rat brain tissue using KIAA1456 Rabbit polyclonal antibody (STJ11105387) at a dilution of 1:200 (40x lens). High pressure antigen retrieval was performed with 0.01 M citrate buffer (pH 6.0) prior to immunohistochemistry staining.



Immunohistochemistry analysis of KIAA1456 in paraffin-embedded Mouse intestine tissue using KIAA1456 Rabbit polyclonal antibody (STJ11105387) at a dilution of 1:200 (40x lens). High pressure antigen retrieval was performed with 0.01 M citrate buffer (pH 6.0) prior to immunohistochemistry staining.



Immunohistochemistry analysis of KIAA1456 in paraffin-embedded Human cervix tissue using KIAA1456 Rabbit polyclonal antibody (STJ11105387) at a dilution of 1:200 (40x lens). High pressure antigen retrieval was performed with 0.01 M citrate buffer (pH 6.0) prior to immunohistochemistry staining.

This product is suitable for in-vitro studies under the RESEARCH USE ONLY [RUO] licence. This product must not be used as for diagnostic or other medical purposes.
St John's Laboratory Ltd, Knowledge Dock Business Centre, University Way, London, E16 2RD | Tel: 0208 223 3081