

Anti-C1qa antibody (23-245) (STJ11105385)
STJ11105385

GENERAL INFORMATION

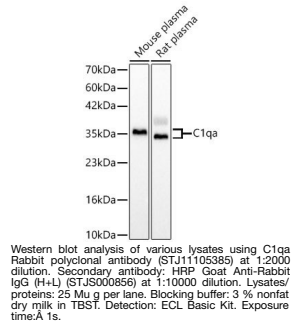
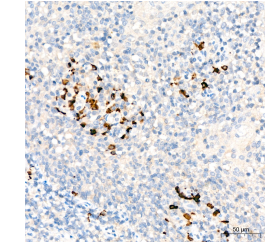
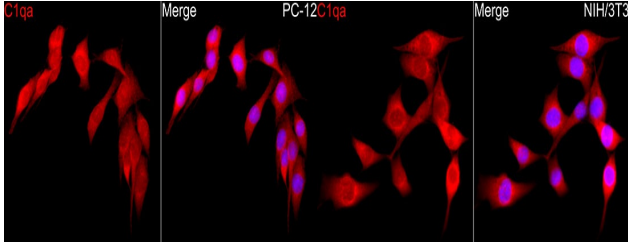
| | |
|--------------------------|-----------------------|
| Product Type | Primary antibodies |
| Short Description | |
| Applications | WB/IHC-P/IF/ICC/ELISA |
| Host/Source | Rabbit |
| Reactivity | Human/Mouse/Rat |

PRODUCT PROPERTIES

| | |
|----------------------|---|
| Clonality | Polyclonal |
| Clone ID | |
| Concentration | Lot specific |
| Conjugation | Unconjugated |
| Purification | Affinity purification |
| Dilution | WB:1:1000-1:5000 |
| Range | IHC-P:1:500-1:1000 IF/ICC:1:100-1:500 ELISA:Recommended starting concentration is 1 µg/mL. Please optimize the concentration based on your specific assay requirements. |
| Formulation | PBS with 0.05% Proclin300, 50% Glycerol, pH 7.3. |
| Isotype | IgG |
| Storage | Store at -20°C for up to 1 year from the date of receipt, and avoid repeat freeze-thaw cycles. |
| Instruction | |

TARGET INFORMATION

| | |
|---------------------------|--|
| Gene ID | 12259 |
| Gene Symbol | C1qa |
| Uniprot ID | C1QA_MOUSE |
| Immunogen | |
| Immunogen Region | 23-245 |
| Specificity | Recombinant fusion protein containing a sequence corresponding to amino acids 23-245 of mouse C1qa (NP_031598.2). |
| Immunogen Sequence | EDVCRAPNGKDGAPGNPGRP GRPGLKGERGEPGAAGIRTG IRGFKGDPGESGPPGKPGNV GLPGPSGPLGDSGPQGLKGV KGNPGNIRDQPRPAFSAIRQ NPMTLGNVVFQDKVLNQES PYQNHTRGFICAVPGFYFNF FQVISKWDLCLFIKSSSGGQ PRDSLFSNTNNKGLFQVLA GGTVLQLRRGDEWIEKDPA KGRIYQGTEADISFGFLIF PSA |



This product is suitable for in-vitro studies under the RESEARCH USE ONLY [RUO] licence. This product must not be used as for diagnostic or other medical purposes.
St John's Laboratory Ltd, Knowledge Dock Business Centre, University Way, London, E16 2RD | Tel: 0208 223 3081