

Anti-SLC27A6 antibody (506-600) (STJ11105378)

STJ11105378

GENERAL INFORMATION

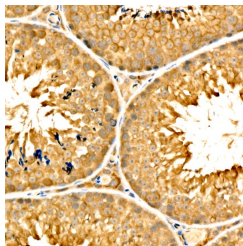
Product Type	Primary antibodies
Short Description	
Applications	IHC-P/ELISA
Host/Source	Rabbit
Reactivity	Human/Mouse

PRODUCT PROPERTIES

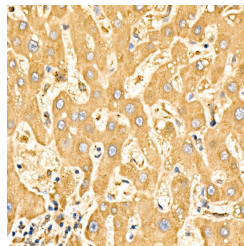
Clonality	Polyclonal
Clone ID	
Concentration	Lot specific
Conjugation	Unconjugated
Purification	Affinity purification
Dilution Range	IHC-P:1:50-1:200 ELISA:Recommended starting concentration is 1 µg/mL. Please optimize the concentration based on your specific assay requirements.
Formulation	PBS with 0.05% Proclin300, 50% Glycerol, pH 7.3.
Isotype	IgG
Storage Instruction	Store at -20°C for up to 1 year from the date of receipt, and avoid repeat freeze-thaw cycles.

TARGET INFORMATION

Gene ID	28965
Gene Symbol	SLC27A6
Uniprot ID	S27A6_HUMAN
Immunogen	
Immunogen Region	506-600
Specificity	Recombinant fusion protein containing a sequence corresponding to amino acids 506-600 of human SLC27A6 (NP_054750.1).
Immunogen Sequence	IQEANYGVVAISGYEGRAGM ASIILKPNSTLDLEKVYEQV VTFLPAYACPRFLRIQEKME ATGTFKLLKHLVEDGFNPL KISEPLYFMDNLKKS



Immunohistochemistry analysis of paraffin-embedded mouse testis using SLC27A6 Rabbit polyclonal antibody (STJ11105378) at dilution of 1:50 (40x lens). Perform high pressure antigen retrieval with 10 mM citrate buffer pH 6.0 before commencing with immunohistochemistry staining protocol.



Immunohistochemistry analysis of paraffin-embedded human liver using SLC27A6 Rabbit polyclonal antibody (STJ11105378) at dilution of 1:50 (40x lens). Perform high pressure antigen retrieval with 10 mM citrate buffer pH 6.0 before commencing with immunohistochemistry staining protocol.

This product is suitable for in-vitro studies under the RESEARCH USE ONLY [RUO] licence. This product must not be used as for diagnostic or other medical purposes.
St John's Laboratory Ltd, Knowledge Dock Business Centre, University Way, London, E16 2RD | Tel: 0208 223 3081