

Anti-KLF1 antibody (211-311) (STJ11105369)

STJ11105369

GENERAL INFORMATION

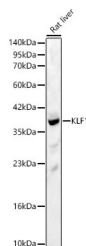
Product Type	Primary antibodies
Short Description	
Applications	WB/ELISA
Host/Source	Rabbit
Reactivity	Mouse/Rat

PRODUCT PROPERTIES

Clonality	Polyclonal
Clone ID	
Concentration	Lot specific
Conjugation	Unconjugated
Purification	Affinity purification
Dilution Range	WB:1:1000-1:5000 ELISA:Recommended starting concentration is 1 Mu g/mL. Please optimize the concentration based on your specific assay requirements.
Formulation	PBS with 0.05% Proclin300, 50% Glycerol, pH 7.3.
Isotype	IgG
Storage	Store at -20°C for up to 1 year from the date of receipt, and avoid repeat freeze-thaw cycles.
Instruction	

TARGET INFORMATION

Gene ID	10661
Gene Symbol	KLF1
Uniprot ID	KLF1_HUMAN
Immunogen	
Immunogen Region	211-311
Specificity	A synthetic peptide corresponding to a sequence within amino acids 211-311 of human KLF1 (NP_006554.1).
Immunogen Sequence	QYQGHFQLFRGLQGPAPGPA TSPSFLSCLGPGTVGTGLGG TAEDPGVIAETAPSKRGRRS WARKRQAAHTCAHPGCGKSY TKSSHLKAHLRTHTEKPYA C



Western blot analysis of Rat liver, using KLF1 Rabbit polyclonal antibody (STJ11105369) at 1:1000 dilution. Secondary antibody: HRP Goat Anti-Rabbit IgG (H+L) (STJS000856) at 1:10000 dilution. Lysates/proteins: 25ug per lane. Blocking buffer: 3% nonfat dry milk in TBST. Detection: ECL Basic Kit. Exposure time: 45s.

This product is suitable for in-vitro studies under the RESEARCH USE ONLY [RUO] licence. This product must not be used as for diagnostic or other medical purposes.
St John's Laboratory Ltd, Knowledge Dock Business Centre, University Way, London, E16 2RD | Tel: 0208 223 3081