

## Anti-SEC14L2 antibody (1-275) (STJ11105363)

STJ11105363

### GENERAL INFORMATION

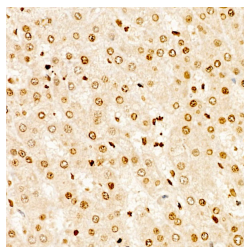
<b>Product Type</b>	Primary antibodies
<b>Short Description</b>	
<b>Applications</b>	IHC-P/ELISA
<b>Host/Source</b>	Rabbit
<b>Reactivity</b>	Human/Mouse/Rat

### PRODUCT PROPERTIES

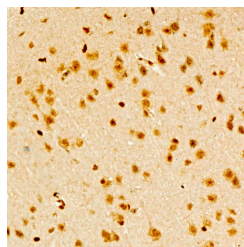
<b>Clonality</b>	Polyclonal
<b>Clone ID</b>	
<b>Concentration</b>	Lot specific
<b>Conjugation</b>	Unconjugated
<b>Purification</b>	Affinity purification
<b>Dilution</b>	IHC-P:1:50-1:200
<b>Range</b>	ELISA:Recommended starting concentration is 1 Mu g/mL. Please optimize the concentration based on your specific assay requirements.
<b>Formulation</b>	PBS with 0.05% Proclin300, 50% Glycerol, pH 7.3.
<b>Isotype</b>	IgG
<b>Storage</b>	Store at-20°C for up to 1 year from the date of receipt, and avoid repeat freeze-thaw cycles.
<b>Instruction</b>	

### TARGET INFORMATION

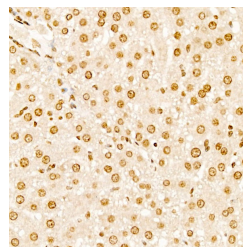
<b>Gene ID</b>	23541
<b>Gene Symbol</b>	SEC14L2
<b>Uniprot ID</b>	S14L2_HUMAN
<b>Immunogen</b>	
<b>Immunogen Region</b>	1-275
<b>Specificity</b>	Recombinant Protein corresponding to a sequence within amino acids 1-275 of human SEC14L2 (NP_203740.1).
<b>Immunogen Sequence</b>	MSGRVGDLSPRQKEALAKFR ENVQDVLPALPNPDDYFLLR WLRARSFDLQKSEAMLRKHV EFRKQKDIDNIISWQPPEVI QQYLSGGMCGYDLGCPVWY DIIGPLDAKGLLFSASKQDL LRTKMRECELLLQECAHQTT KLGRKVETITIIYDCEGLGL KHLWKPAVEAYGEFLCMFEE NYPETLKRFLVVKAPKLFVP AYNLIKPFLLSEDTRKKIMVL GANWKEVLLKHISPDQVPV



Immunohistochemistry analysis of SEC14L2 in paraffin-embedded human liver tissue using SEC14L2 Rabbit polyclonal antibody (STJ11105363) at a dilution of 1:100 (40x lens). High pressure antigen retrieval was performed with 0.01 M citrate buffer (pH 6.0) prior to immunohistochemistry staining.



Immunohistochemistry analysis of SEC14L2 in paraffin-embedded mouse brain tissue using SEC14L2 Rabbit polyclonal antibody (STJ11105363) at a dilution of 1:100 (40x lens). High pressure antigen retrieval was performed with 0.01 M citrate buffer (pH 6.0) prior to immunohistochemistry staining.



Immunohistochemistry analysis of SEC14L2 in paraffin-embedded rat liver tissue using SEC14L2 Rabbit polyclonal antibody (STJ11105363) at a dilution of 1:100 (40x lens). High pressure antigen retrieval was performed with 0.01 M citrate buffer (pH 6.0) prior to immunohistochemistry staining.

This product is suitable for in-vitro studies under the RESEARCH USE ONLY [RUO] licence. This product must not be used as for diagnostic or other medical purposes.  
St John's Laboratory Ltd, Knowledge Dock Business Centre, University Way, London, E16 2RD | Tel: 0208 223 3081