

Anti-TOP2A antibody (1431-1531) (STJ11105362)
STJ11105362

GENERAL INFORMATION

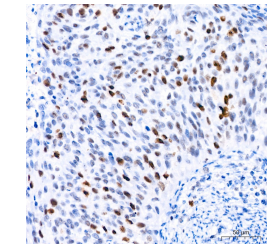
Product Type	Primary antibodies
Short Description	
Applications	WB/IHC-P/ELISA
Host/Source	Rabbit
Reactivity	Human

PRODUCT PROPERTIES

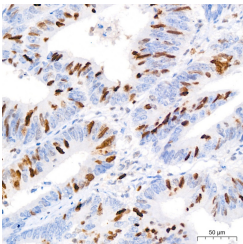
Clonality	Polyclonal
Clone ID	
Concentration	Lot specific
Conjugation	Unconjugated
Purification	Affinity purification
Dilution Range	WB:1:500-1:1000 IHC-P:1:50-1:200 ELISA:Recommended starting concentration is 1 Mu g/mL. Please optimize the concentration based on your specific assay requirements.
Formulation	PBS with 0.05% Proclin300, 50% Glycerol, pH 7.3.
Isotype	IgG
Storage	Store at -20°C for up to 1 year from the date of receipt, and avoid repeat freeze-thaw cycles.
Instruction	

TARGET INFORMATION

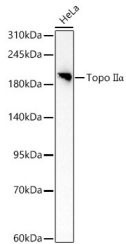
Gene ID	7153
Gene Symbol	TOP2A
Uniprot ID	TOP2A_HUMAN
Immunogen	
Immunogen Region	1431-1531
Specificity	A synthetic peptide corresponding to a sequence within amino acids 1431-1531 of human Topo II Alpha (NP_001058.2). GAKKRAAPKGTGRDPALNSG VSQKPDPAKTKNRRKRKPSST SDDSDSNFEKIVSKAVTSKK SKGESDDFHMDFD SAVAPRA
Immunogen Sequence	KSVRAKKPIKYLEEDEDL F



Immunohistochemistry analysis of human cervix cancer tissue using Topo II Alpha Rabbit polyclonal antibody (STJ11105362) at a dilution of 1:100 (40x lens). High pressure antigen retrieval was performed with 0.01 M Tris-EDTA buffer (pH 9.0) prior to immunohistochemistry staining.



Immunohistochemistry analysis of human colon carcinoma tissue using Topo II Alpha Rabbit polyclonal antibody (STJ11105362) at a dilution of 1:100 (40x lens). High pressure antigen retrieval was performed with 0.01 M Tris-EDTA buffer (pH 9.0) prior to immunohistochemistry staining.



Western blot analysis of lysates from HeLa cells, using Topo II Alpha Rabbit polyclonal antibody (STJ11105362) at 1:400 dilution. Secondary antibody: HRP Goat Anti-Rabbit IgG (H+L) (STJ5000856) at 1:10000 dilution. Lysates/proteins: 25ug per lane. Blocking buffer: 3% nonfat dry milk in TBST. Detection: ECL Basic Kit. Exposure time: 10s.

This product is suitable for in-vitro studies under the RESEARCH USE ONLY [RUO] licence. This product must not be used as for diagnostic or other medical purposes.
St John's Laboratory Ltd, Knowledge Dock Business Centre, University Way, London, E16 2RD | Tel: 0208 223 3081