

Anti-TIM-1/KIM-1/HAVCR antibody (22-237) (STJ11105360)

STJ11105360

GENERAL INFORMATION

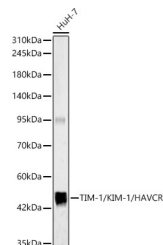
Product Type	Primary antibodies
Short Description	
Applications	WB/ELISA
Host/Source	Rabbit
Reactivity	Human

PRODUCT PROPERTIES

Clonality	Polyclonal
Clone ID	
Concentration	Lot specific
Conjugation	Unconjugated
Purification	Affinity purification
Dilution	WB:1:2000-1:8000
Range	ELISA:Recommended starting concentration is 1 µg/mL. Please optimize the concentration based on your specific assay requirements.
Formulation	PBS with 0.05% Proclin300, 50% Glycerol, pH 7.3.
Isotype	IgG
Storage	Store at -20°C for up to 1 year from the date of receipt, and avoid repeat freeze-thaw cycles.
Instruction	

TARGET INFORMATION

Gene ID	171283
Gene Symbol	Havcr1
Uniprot ID	HAVR1_MOUSE
Immunogen	
Immunogen Region	22-237
Specificity	Recombinant fusion protein containing a sequence corresponding to amino acids 22-237 of mouse TIM-1/KIM-1/HAVCR (NP_599009.2).
Immunogen Sequence	YVEVKGVVGHVPVTLPCYST YRGITTCWGRGQCPSSACQ NTLIWTNGHRVTYQKSSRYN LKGHISEGDVSLTIENSVES DSGLYCCRVEIPGWFDQKV TFSLQVKPEIPTRPPTPT TRPTATGRPTTISTRSTHVP TSIRVSTSTPPTSTHTWTHK PEPTTFCHETTAETVGIPS HPTDWNNGTVTSSGDTWSNH TEAIPPGKPKQKNPTKG



Western blot analysis of HuH-7, using TIM-1/KIM-1/HAVCR Rabbit polyclonal antibody (STJ11105360) at 1:7000 dilution. Secondary antibody: HRP-Goat Anti-Rabbit IgG (H+L) (STJS000858) at 1:10000 dilution. Lysates/proteins: 25 µg per lane. Blocking buffer: 3% nonfat dry milk in TBST. Detection: ECL Basic Kit. Exposure time: 180s.

This product is suitable for in-vitro studies under the RESEARCH USE ONLY [RUO] licence. This product must not be used as for diagnostic or other medical purposes.

St John's Laboratory Ltd, Knowledge Dock Business Centre, University Way, London, E16 2RD | Tel: 0208 223 3081