

Anti-NAPSA antibody (64-190) (STJ11105353)

STJ11105353

GENERAL INFORMATION

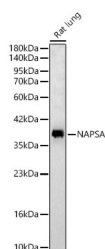
Product Type	Primary antibodies
Short Description	
Applications	WB/ELISA
Host/Source	Rabbit
Reactivity	Rat

PRODUCT PROPERTIES

Clonality	Polyclonal
Clone ID	
Concentration	Lot specific
Conjugation	Unconjugated
Purification	Affinity purification
Dilution Range	WB:1:1000-1:5000 ELISA:Recommended starting concentration is 1 Mu g/mL. Please optimize the concentration based on your specific assay requirements.
Formulation	PBS with 0.05% Proclin300, 50% Glycerol, pH 7.3.
Isotype	IgG
Storage	Store at -20°C for up to 1 year from the date of receipt, and avoid repeat freeze-thaw cycles.
Instruction	

TARGET INFORMATION

Gene ID	9476
Gene Symbol	NAPSA
Uniprot ID	NAPSA_HUMAN
Immunogen	
Immunogen Region	64-190
Specificity	Recombinant fusion protein containing a sequence corresponding to amino acids 64-190 of human NAPSA (NP_004842.1).
Immunogen Sequence	KPIFVPLSNYRDVQYFGEIG LGTPPQNFTVAFDTGSSNLW VPSRRCHFFSVPCWLHHRFD PKASSSFQANGTKFAIQYGT GRVDGILSEDKLTIGGIKGA SVIFGEALWEPSLVFAFAHF DGILGLG



Western blot analysis of Rat lung, using NAPSA Rabbit polyclonal antibody (STJ11105353) at 1:2000 dilution. Secondary antibody: HRP Goat Anti-Rabbit IgG (H+L) (STJ5000856) at 1:10000 dilution. Lysates/proteins: 25ug per lane. Blocking buffer: 3% nonfat dry milk in TBST. Detection: ECL Basic Kit. Exposure time: 30s.

This product is suitable for in-vitro studies under the RESEARCH USE ONLY [RUO] licence. This product must not be used as for diagnostic or other medical purposes.
St John's Laboratory Ltd, Knowledge Dock Business Centre, University Way, London, E16 2RD | Tel: 0208 223 3081