

## Anti-MMP1 antibody (369-469) (STJ11105323)

STJ11105323

### GENERAL INFORMATION

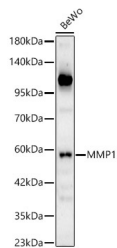
|                          |                    |
|--------------------------|--------------------|
| <b>Product Type</b>      | Primary antibodies |
| <b>Short Description</b> |                    |
| <b>Applications</b>      | WB                 |
| <b>Host/Source</b>       | Rabbit             |
| <b>Reactivity</b>        | Human/Mouse        |

### PRODUCT PROPERTIES

|                       |                                                                                                |
|-----------------------|------------------------------------------------------------------------------------------------|
| <b>Clonality</b>      | Polyclonal                                                                                     |
| <b>Clone ID</b>       |                                                                                                |
| <b>Concentration</b>  | Lot specific                                                                                   |
| <b>Conjugation</b>    | Unconjugated                                                                                   |
| <b>Purification</b>   | Affinity purification                                                                          |
| <b>Dilution Range</b> | WB:1:500-1:1000                                                                                |
| <b>Formulation</b>    | PBS with 0.05% Proclin300, 50% Glycerol, pH 7.3.                                               |
| <b>Isotype</b>        | IgG                                                                                            |
| <b>Storage</b>        | Store at -20°C for up to 1 year from the date of receipt, and avoid repeat freeze-thaw cycles. |
| <b>Instruction</b>    |                                                                                                |

### TARGET INFORMATION

|                           |                                                                                                          |
|---------------------------|----------------------------------------------------------------------------------------------------------|
| <b>Gene ID</b>            | <a href="#">4312</a>                                                                                     |
| <b>Gene Symbol</b>        | <a href="#">MMP1</a>                                                                                     |
| <b>Uniprot ID</b>         | <a href="#">MMP1_HUMAN</a>                                                                               |
| <b>Immunogen</b>          |                                                                                                          |
| <b>Immunogen Region</b>   | 369-469                                                                                                  |
| <b>Specificity</b>        | A synthetic peptide corresponding to a sequence within amino acids 369-469 of human MMP1 (NP_002412.1).  |
| <b>Immunogen Sequence</b> | FPRTVKHIDAALSEENTGKT YFFVANKYWRYDEYKRMDP GYPKMAHDFPGIGHKVDV FMKDGFFYFFHGTRQYKFDP<br>KTKRIILTQKANSWFNCRKN |



Western blot analysis of lysates from BeWo cells, using MMP1 Rabbit polyclonal antibody (STJ11105323) at 1:1000 dilution. Secondary antibody: HRP Goat Anti-Rabbit IgG (H+L) (STJS000858) at 1:10000 dilution. Lysates/proteins: 25µg per lane. Blocking buffer: 3% nonfat dry milk in TBST. Detection: ECL Basic Kit. Exposure time: 180s.

This product is suitable for in-vitro studies under the RESEARCH USE ONLY [RUO] licence. This product must not be used as for diagnostic or other medical purposes.  
St John's Laboratory Ltd, Knowledge Dock Business Centre, University Way, London, E16 2RD | Tel: 0208 223 3081