

## Anti-BIRC5 antibody (1-142) (STJ11105318)

STJ11105318

### GENERAL INFORMATION

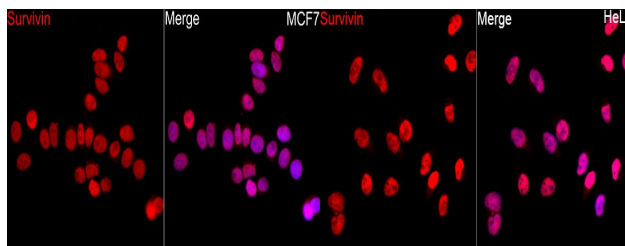
<b>Product Type</b>	Primary antibodies
<b>Short Description</b>	
<b>Applications</b>	WB/IF/ICC
<b>Host/Source</b>	Rabbit
<b>Reactivity</b>	Human/Rat

### PRODUCT PROPERTIES

<b>Clonality</b>	Polyclonal
<b>Clone ID</b>	
<b>Concentration</b>	Lot specific
<b>Conjugation</b>	Unconjugated
<b>Purification</b>	Affinity purification
<b>Dilution</b>	WB:1:1000-1:5000
<b>Range</b>	IF/CC:1:50-1:200
<b>Formulation</b>	PBS with 0.05% Proclin300, 50% Glycerol, pH 7.3.
<b>Isotype</b>	IgG
<b>Storage</b>	Store at -20°C for up to 1 year from the date of receipt, and avoid repeat freeze-thaw cycles.
<b>Instruction</b>	

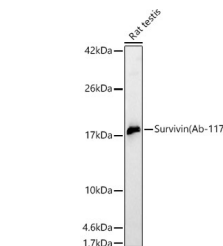
### TARGET INFORMATION

<b>Gene ID</b>	332
<b>Gene Symbol</b>	BIRC5
<b>Uniprot ID</b>	BIRC5_HUMAN
<b>Immunogen</b>	
<b>Immunogen Region</b>	1-142
<b>Specificity</b>	A synthetic peptide corresponding to a sequence within amino acids 1-142 of human Survivin (NP_001159.2)
<b>Immunogen Sequence</b>	MGAPTLPPAWQPFLKDHRS TFKNWPFLGCACTPERMAE AGFIHCPTENEPDLAQCFEC FKELEGWEPDDDPIDEEHKKH SSGCAFLSVKQFEELTLGE FLKLDREKAKNKIAKETNNK KKEFEETAKKVRRAIEQLAA MD



Immunofluorescence analysis of MCF7 cells using Survivin Rabbit polyclonal antibody (STJ11105318) at dilution of 1:100 (40x lens). Secondary antibody: Cy3 Goat Anti-Rabbit IgG (H+L) at 1:500 dilution. Blue: DAPI for nuclear staining.

Immunofluorescence analysis of HeLa cells using Survivin Rabbit polyclonal antibody (STJ11105318) at dilution of 1:100 (40x lens). Secondary antibody: Cy3 Goat Anti-Rabbit IgG (H+L) at 1:500 dilution. Blue: DAPI for nuclear staining.



Western blot analysis of lysates from Rat testis, using Survivin Rabbit polyclonal antibody (STJ11105318) at 1:2000 dilution. Secondary antibody: HRP Goat Anti-Rabbit IgG (H+L) (STJ5000856) at 1:10000 dilution. Lysates/proteins: 25ug per lane. Blocking buffer: 3% nonfat dry milk in TBST. Detection: ECL Basic Kit. Exposure time: 180s.

This product is suitable for in-vitro studies under the RESEARCH USE ONLY [RUO] licence. This product must not be used as for diagnostic or other medical purposes.  
St John's Laboratory Ltd, Knowledge Dock Business Centre, University Way, London, E16 2RD | Tel: 0208 223 3081