

**Anti-CBX3 antibody (1-183) (STJ11105306)**  
STJ11105306

**GENERAL INFORMATION**

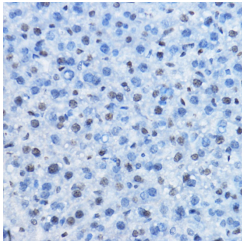
<b>Product Type</b>	Primary antibodies
<b>Short Description</b>	
<b>Applications</b>	WB/IHC-P/ELISA
<b>Host/Source</b>	Rabbit
<b>Reactivity</b>	Human/Mouse/Rat

**PRODUCT PROPERTIES**

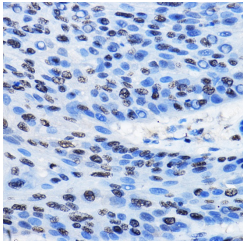
<b>Clonality</b>	Polyclonal
<b>Clone ID</b>	
<b>Concentration</b>	Lot specific
<b>Conjugation</b>	Unconjugated
<b>Purification</b>	Affinity purification
<b>Dilution</b>	WB:1:500-1:1000
<b>Range</b>	IHC-P:1:50-1:200 ELISA:Recommended starting concentration is 1 Mu g/mL. Please optimize the concentration based on your specific assay requirements.
<b>Formulation</b>	PBS with 0.05% Proclin300, 50% Glycerol, pH 7.3.
<b>Isotype</b>	IgG
<b>Storage Instruction</b>	Store at -20°C for up to 1 year from the date of receipt, and avoid repeat freeze-thaw cycles.

**TARGET INFORMATION**

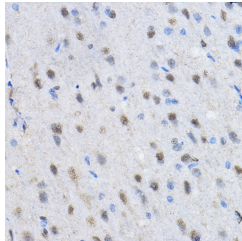
<b>Gene ID</b>	11335
<b>Gene Symbol</b>	CBX3
<b>Uniprot ID</b>	CBX3_HUMAN
<b>Immunogen</b>	
<b>Immunogen Region</b>	1-183
<b>Specificity</b>	Recombinant fusion protein containing a sequence corresponding to amino acids 1-183 of human HP1 gamma/CBX3 (NP_009207.2).
<b>Immunogen Sequence</b>	MASNKTTLQKMGGKQNGKSK KVEEAPEEFVVEKVLDRRV VNGKVEYFLKWKGFTDADNT WEPEENLDCPELIEAFLNSQ KAGKEKDGTGRKSLSDSESD DSKSKKKRDAADKPRGFARG LDPERIIGATDSSGELMFLM KWKDSDEADLVLAKEANMKC PQIVAFYEERLTWHSCPED EAQ



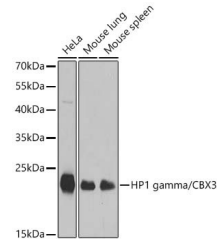
Immunohistochemistry analysis of HP1 gamma/CBX3 in paraffin-embedded mouse liver using HP1 gamma/HP1 gamma/CBX3 Rabbit polyclonal antibody (STJ11105306) at dilution of 1:50 (40x lens). Perform high pressure antigen retrieval with 10 mM citrate buffer pH 6.0 before commencing with immunohistochemistry staining protocol.



Immunohistochemistry analysis of HP1 gamma/CBX3 in paraffin-embedded human esophageal cancer using HP1 gamma/HP1 gamma/CBX3 Rabbit polyclonal antibody (STJ11105306) at dilution of 1:50 (40x lens). Perform high pressure antigen retrieval with 10 mM citrate buffer pH 6.0 before commencing with immunohistochemistry staining protocol.



Immunohistochemistry analysis of HP1 gamma/CBX3 in paraffin-embedded rat brain using HP1 gamma/HP1 gamma/CBX3 Rabbit polyclonal antibody (STJ11105306) at dilution of 1:50 (40x lens). Perform high pressure antigen retrieval with 10 mM citrate buffer pH 6.0 before commencing with immunohistochemistry staining protocol.



Western blot analysis of various lysates using HP1 gamma/CBX3 Rabbit polyclonal antibody (STJ11105306) at 1:1000 dilution. Secondary antibody: HRP Goat Anti-Rabbit IgG (H+L) (STJ5000856) at 1:10000 dilution. Lysates/ proteins: 25 Mu g per lane. Blocking buffer: 3 % nonfat dry milk in TBST. Detection: ECL Basic Kit. Exposure time: 1 s.

This product is suitable for in-vitro studies under the RESEARCH USE ONLY [RUO] licence. This product must not be used as for diagnostic or other medical purposes.  
St John's Laboratory Ltd, Knowledge Dock Business Centre, University Way, London, E16 2RD | Tel: 0208 223 3081