

Anti-GATA2 antibody (240-340) (STJ11105296)

STJ11105296

GENERAL INFORMATION

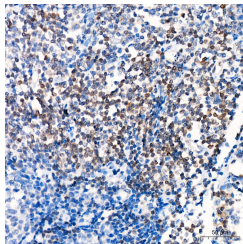
Product Type	Primary antibodies
Short Description	
Applications	IHC-P/ELISA
Host/Source	Rabbit
Reactivity	Human

PRODUCT PROPERTIES

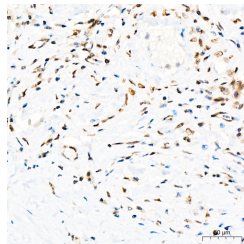
Clonality	Polyclonal
Clone ID	
Concentration	Lot specific
Conjugation	Unconjugated
Purification	Affinity purification
Dilution Range	IHC-P:1:50-1:200 ELISA:Recommended starting concentration is 1 Mu g/mL. Please optimize the concentration based on your specific assay requirements.
Formulation	PBS with 0.05% Proclin300, 50% Glycerol, pH 7.3.
Isotype	IgG
Storage Instruction	Store at -20°C for up to 1 year from the date of receipt, and avoid repeat freeze-thaw cycles.

TARGET INFORMATION

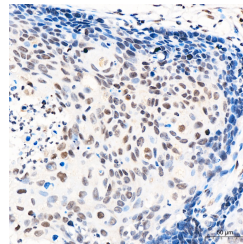
Gene ID	2624
Gene Symbol	GATA2
Uniprot ID	GATA2_HUMAN
Immunogen	
Immunogen Region	240-340
Specificity	A synthetic peptide corresponding to a sequence within amino acids 240-340 of human GATA2 (NP_116027.2).
Immunogen Sequence	PATHHPIPTYPSPYVPAAAHD YSSGLFHPGGFLGGPASSFT PKQRSKARSCSEGRECVNCG ATATPLWRRDGTGHYLCNAC GLYHKMNGQNRPLIKPKRRL S



Immunohistochemistry analysis of GATA2 in paraffin-embedded human tonsil tissue using GATA2 Rabbit polyclonal antibody (STJ11105296) at a dilution of 1:100 (40x lens). High pressure antigen retrieval was performed with 0.01 M citrate buffer (pH 6.0) prior to immunohistochemistry staining.



Immunohistochemistry analysis of GATA2 in paraffin-embedded human testis tissue using GATA2 Rabbit polyclonal antibody (STJ11105296) at a dilution of 1:100 (40x lens). High pressure antigen retrieval was performed with 0.01 M citrate buffer (pH 6.0) prior to immunohistochemistry staining.



Immunohistochemistry analysis of GATA2 in paraffin-embedded human cervical squamous cell carcinoma tissue using GATA2 Rabbit polyclonal antibody (STJ11105296) at a dilution of 1:100 (40x lens). High pressure antigen retrieval was performed with 0.01 M citrate buffer (pH 6.0) prior to immunohistochemistry staining.