

Anti-Cleaved-IL18-Tyr37 antibody [S5289RM] (STJ11105289)

STJ11105289

GENERAL INFORMATION

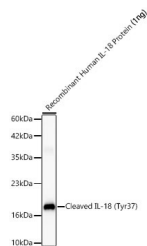
Product Type	Primary antibodies
Short Description	
Applications	WB
Host/Source	Rabbit
Reactivity	Human

PRODUCT PROPERTIES

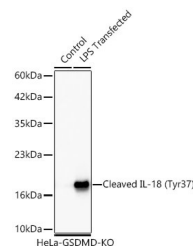
Clonality	Monoclonal
Clone ID	S5289RM
Concentration	Lot specific
Conjugation	Unconjugated
Purification	Affinity purification
Dilution Range	WB:1:1000-1:2000
Formulation	PBS with 0.09% Sodium Azide, 0.05% BSA, 50% Glycerol, pH 7.3.
Isotype	IgG
Storage Instruction	Store at -20°C for up to 1 year from the date of receipt, and avoid repeat freeze-thaw cycles.

TARGET INFORMATION

Gene ID	3606
Gene Symbol	IL18
Uniprot ID	IL18_HUMAN
Immunogen	
Immunogen Region	
Specificity	A synthetic peptide corresponding to residues surrounding Tyr37 of human IL18 (NP_001553.1).
Immunogen Sequence	



Western blot analysis of recombinant Human IL-18 Protein using Cleaved IL-18 (Tyr37) Rabbit monoclonal antibody (STJ11105289) at 1:1000 dilution. Secondary antibody: HRP Goat Anti-Rabbit IgG (H+L) (STJS000856) at 1:10000 dilution. Lysates/proteins: 1 ng per lane. Blocking buffer: 3% nonfat dry milk in TBST. Detection: ECL Basic Kit. Exposure time: 60s.



Western blot analysis of lysates from GSDMD knockout (KO) HeLa cells and GSDMD knockout (KO) HeLa cells transfected with LPS using Cleaved IL-18 (Tyr37) Rabbit monoclonal antibody (STJ11105289) at 1:1000 dilution. Secondary antibody: HRP Goat Anti-Rabbit IgG (H+L) (STJS000856) at 1:10000 dilution. Lysates/proteins: 25 µg per lane. Blocking buffer: 3% nonfat dry milk in TBST. Detection: ECL Basic Kit. Exposure time: 60s. Western blot samples for antibody validation are kindly provided by Dr. Feng Shao, NIBS.

This product is suitable for in-vitro studies under the RESEARCH USE ONLY [RUO] licence. This product must not be used as for diagnostic or other medical purposes.
St John's Laboratory Ltd, Knowledge Dock Business Centre, University Way, London, E16 2RD | Tel: 0208 223 3081