

Anti-TIFAB antibody (62-161) [S5285RM] (STJ11105285)

STJ11105285

GENERAL INFORMATION

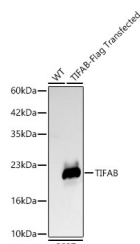
Product Type	Primary antibodies
Short Description	
Applications	WB/ELISA
Host/Source	Rabbit
Reactivity	Human

PRODUCT PROPERTIES

Clonality	Monoclonal
Clone ID	S5285RM
Concentration	Lot specific
Conjugation	Unconjugated
Purification	Affinity purification
Dilution Range	WB:1:1000-1:5000 ELISA:Recommended starting concentration is 1 Mu g/mL. Please optimize the concentration based on your specific assay requirements.
Formulation	PBS with 0.05% Proclin300, 0.05% BSA, 50% Glycerol, pH 7.3.
Isotype	IgG
Storage Instruction	Store at -20°C for up to 1 year from the date of receipt, and avoid repeat freeze-thaw cycles.

TARGET INFORMATION

Gene ID	497189
Gene Symbol	TIFAB
Uniprot ID	TIFAB_HUMAN
Immunogen	
Immunogen	62-161
Region	
Specificity	A synthetic peptide corresponding to a sequence within amino acids 62-161 of human TIFAB (NP_001092691.1)
Immunogen	PYLEKGSALLAFCLKALSRK GCVWVNGLTLYLEQVPLST VNRVSFSGIQMLVRVEEGTS LEAFVCYFHVSPSPLIYRPE
Sequence	AEETDEWEGISQGQPPPGSG



Western blot analysis of lysates from wild type (WT) and 293T transfected with TIFAB-Rag1, using TIFAB Rabbit monoclonal antibody (STJ11105285) at 1:2000 dilution. Secondary antibody: HRP Goat Anti-Rabbit IgG (H+L) (STJS000856) at 1:10000 dilution. Lysates/proteins: 25ug per lane. Blocking buffer: 3% nonfat dry milk in TBST. Detection: ECL Basic Kit. Exposure time: 10s.

This product is suitable for in-vitro studies under the RESEARCH USE ONLY [RUO] licence. This product must not be used as for diagnostic or other medical purposes.
St John's Laboratory Ltd, Knowledge Dock Business Centre, University Way, London, E16 2RD | Tel: 0208 223 3081